

APP CRS	Rwy Idg	<b>2998</b>
<b>059°</b>	TDZE	<b>5</b>
	Apt Elev	<b>5</b>

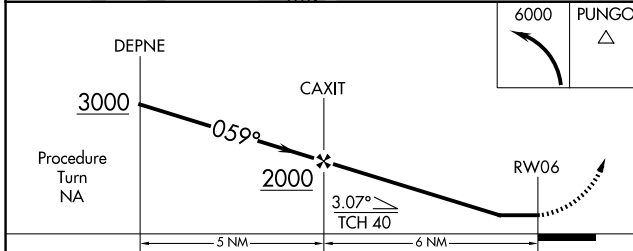
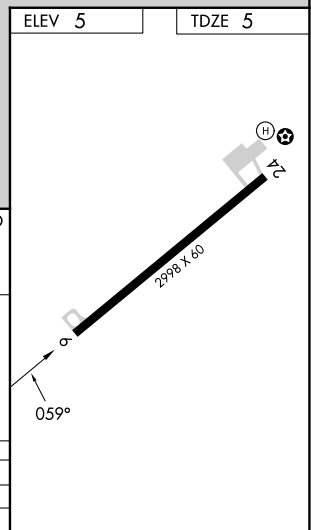
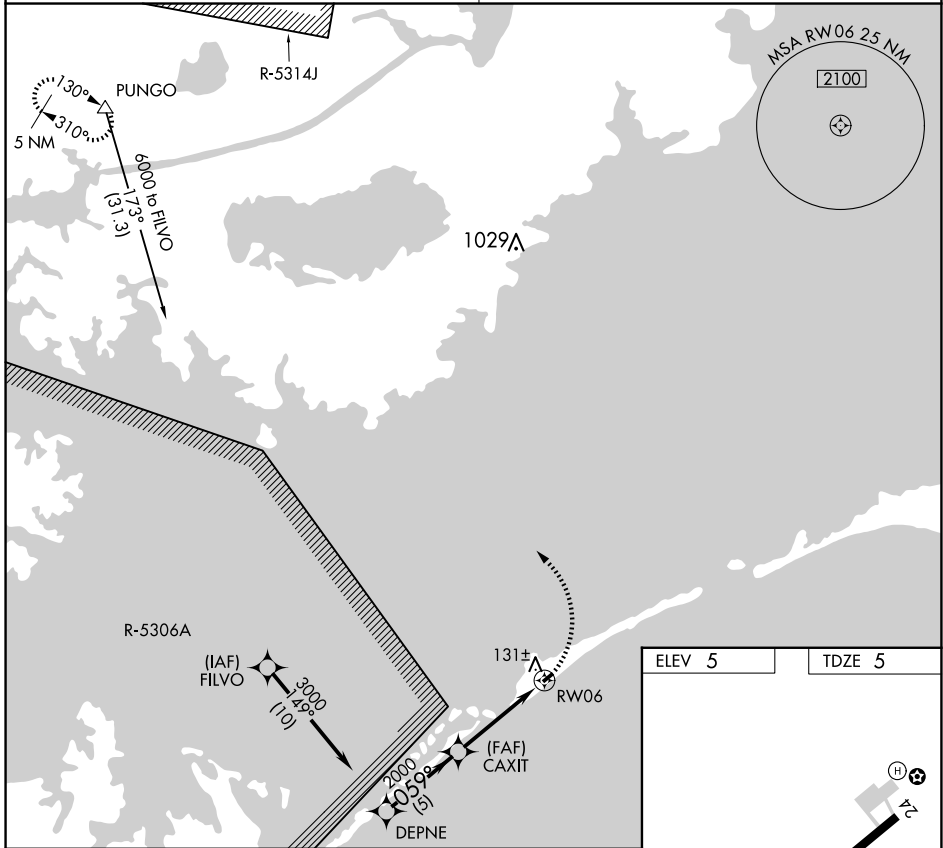
# RNAV (GPS) RWY 6

OCRACOKE ISLAND (W95)

**NA** Procedure NA at night. Use Hatters altimeter setting, when not received procedure NA. DME/DME RNP-0.3 NA. Helicopter visibility reduction below 1 SM NA.

**MISSED APPROACH:** Climbing left turn to 6000 direct PUNGO WP and hold.

CHERRY POINT APP CON <b>119.75 360.775</b>	CTAF <b>122.9</b>
---	----------------------



CATEGORY	A	B	C	D
LNNAV MDA	500-1	495 (500-1)		NA
CIRCLING	560-1	555 (600-1)		NA

SE-2, 14 MAY 2026 to 11 JUN 2026

SE-2, 14 MAY 2026 to 11 JUN 2026