

WAAS CH 63246 W26A	APP CRS 255°	Rwy Idg TDZE Apt Elev	4903 308 309
--	------------------------	-----------------------------	---

RNAV (GPS) RWY 26

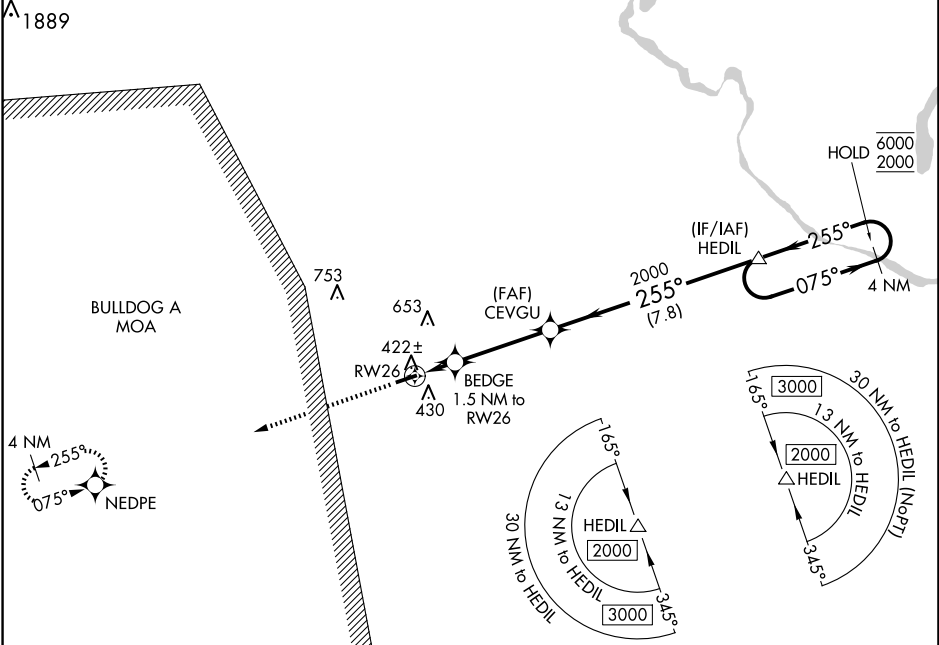
BURKE COUNTY (B.X.G)

RNP APCH - GPS.

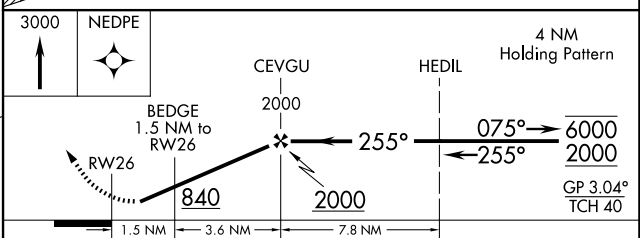
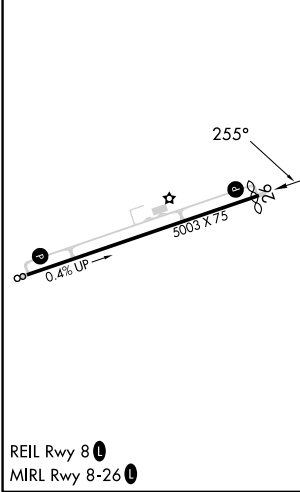
▼ Rwy 26 helicopter visibility reduction below 3/4 SM NA.
▲ NA Baro-VNAV NA. Use AGS altimeter setting.

MISSED APPROACH: Climb to 3000 direct NEDPE and hold, continue climb-in-hold to 3000.

AGS ASOS 132.75	AUGUSTA APP CON* 126.8 270.3	CTAF 122.9
---------------------------	--	----------------------



ELEV 309	D	TDZE 308
----------	----------	----------



CATEGORY	A	B	C	D
LPV DA		666-1 358 (400-1)		
LNAV/VNAV DA		676-1 368 (400-1)		
LNAV MDA	760-1 452 (500-1)		760-1 ³ / ₈ 452 (500-1 ³ / ₈)	
CIRCLING	820-1 511 (600-1)	900-1 591 (600-1)	1080-2 ¹ / ₄ 771 (800-2 ¹ / ₄)	1180-3 871 (900-3)

SE-4, 14 MAY 2026 to 11 JUN 2026

SE-4, 14 MAY 2026 to 11 JUN 2026