

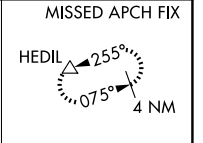
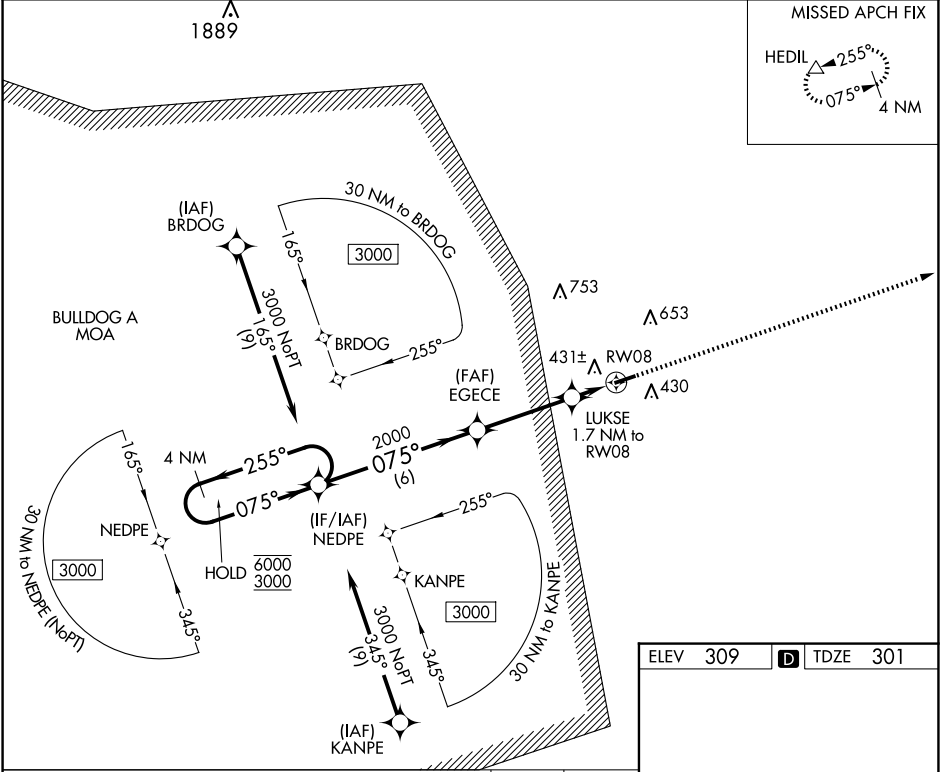
WAAS CH <b>77946</b> <b>W08A</b>	APP CRS <b>075°</b>	Rwy Idg TDZE Apt Elev	<b>5003</b> <b>301</b> <b>309</b>
--	------------------------	-----------------------------	---

# RNAV (GPS) RWY 8

BURKE COUNTY (BXXG)

RNP APCH-GPS.	MISSED APPROACH: Climb to 2000 direct HEDIL and hold.
Rwy 8 helicopter visibility reduction below 3/4 SM NA.	
Baro-VNAV NA. Use AGS altimeter setting.	

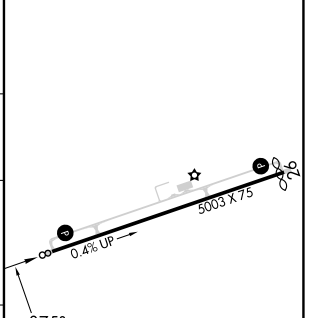
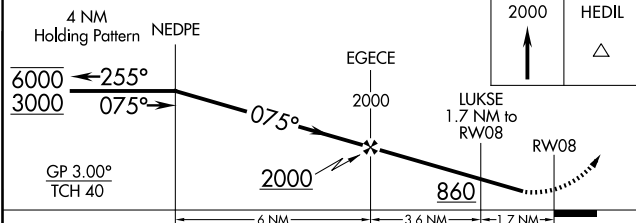
AGS ASOS <b>132.75</b>	AUGUSTA APP CON * <b>126.8 270.3</b>	CTAF <b>122.9</b>
---------------------------	---	----------------------



SE-4, 14 MAY 2026 to 11 JUN 2026

SE-4, 14 MAY 2026 to 11 JUN 2026

ELEV 309	TDZE 301
----------	----------



CATEGORY	A	B	C	D
LPV DA		698-1 $\frac{1}{8}$	397 (400-1 $\frac{1}{8}$ )	
LNAV/VNAV DA		782-1 $\frac{3}{8}$	481 (500-1 $\frac{3}{8}$ )	
LNAV MDA	760-1	459 (500-1)	760-1 $\frac{3}{8}$	459 (500-1 $\frac{3}{8}$ )
CIRCLING	820-1 511 (600-1)	900-1 591 (600-1)	1080-2 $\frac{1}{4}$ 771 (800-2 $\frac{1}{4}$ )	1180-2 $\frac{3}{4}$ 871 (900-2 $\frac{3}{4}$ )

REIL Rwy 8	MIRL Rwy 8-26
------------	---------------