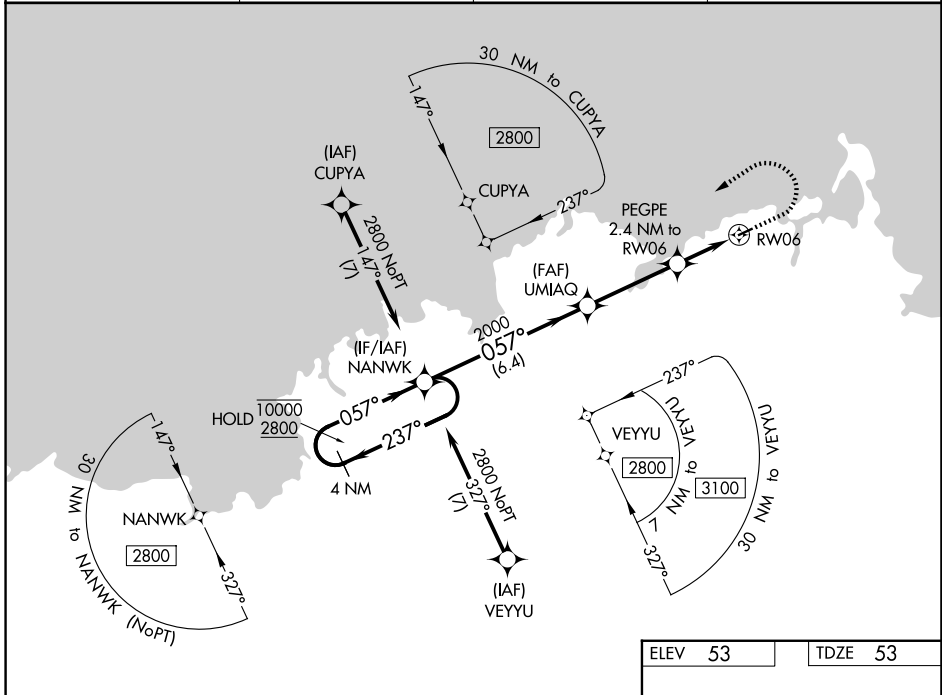


WAAS CH 78443 W06A	APP CRS 057°	Rwy Ldg TDZE Apt Elev	3001 53 53
--	------------------------	-----------------------------	---------------------------------------

RNAV (GPS) RWY 6

MEKORYUK (MYU) (PAMY)

RNP APCH-GPS.		MISSED APPROACH: Climb to 700 then climbing left turn to 2800 direct NANWK and hold.	
Circling NA southeast of Rwy 6-24.		AWOS-3P 123.9	ANCHORAGE CENTER 124.5 372.0
		KENAI RADIO 122.0	CTAF 122.9 0



AK, 14 MAY 2026 to 09 JUL 2026

AK, 14 MAY 2026 to 09 JUL 2026

VGSI and RNAV glidepath not coincident (VGSI Angle 3.00/TCH 28). 4 NM Holding Pattern NANWK 10000 ← 237° 2800 → 057° GP 3.00° TCH 40		700 2800 NANWK		
2000 UUMIAQ 2000 860 PEGPE 2.4 NM to RWY 6 1.6 NM to RWY 6		RWY 6 3001 X 75		
CATEGORY	A	B	C	D
LPV DA		303-1	250 (300-1)	
LNAV/VNAV DA		303-1	250 (300-1)	
LNAV MDA	580-1	527 (600-1)	580-1½	527 (600-1½)
CIRCLING	580-1 527 (600-1)	640-1 587 (600-1)	660-1¾ 607 (700-1¾)	860-2½ 807 (900-2½)

ELEV 53	TDZE 53
MIRL Rwy 6-24 0	