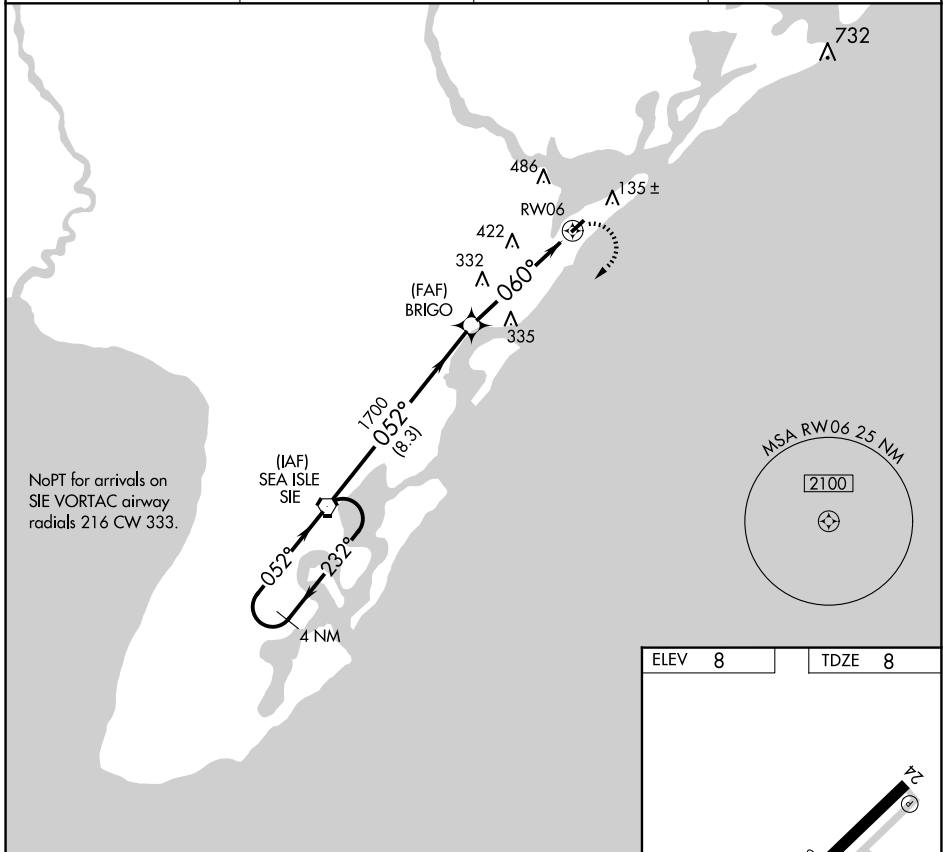


APP CRS	Rwy Ldg	<b>2972</b>
<b>060°</b>	TDZE	<b>8</b>
	Apt Elev	<b>8</b>

# GPS RWY 6

OCEAN CITY MUNI (26N)

<p><b>▲ NA</b> When local altimeter setting not received, use Atlantic City altimeter setting.</p>		<p>MISSED APPROACH: Climbing right turn to 2000 direct SIE VORTAC and hold.</p>	
AWOS-AV	ATLANTIC CITY APP CON	CLNC DEL	UNICOM
<b>119.775</b>	<b>124.6 327.125</b>	<b>133.6</b>	<b>122.7 (CTAF) 0</b>

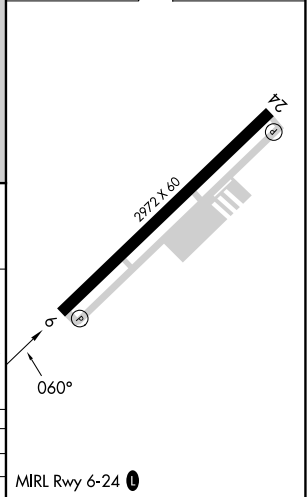
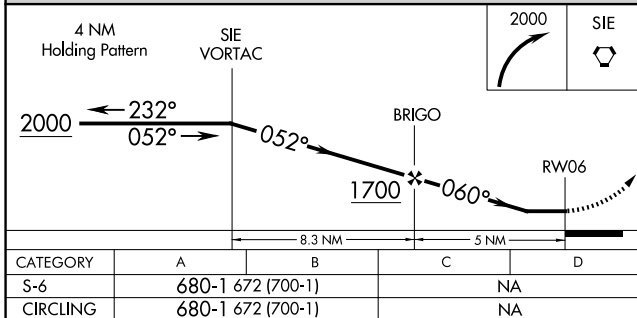


NE-2, 14 MAY 2026 to 11 JUN 2026

NE-2, 14 MAY 2026 to 11 JUN 2026

NoPT for arrivals on SIE VORTAC airway radials 216 CW 333.

ELEV	<b>8</b>	TDZE	<b>8</b>
------	----------	------	----------



CATEGORY	A	B	C	D
S-6	680-1 672 (700-1)			NA
CIRCLING	680-1 672 (700-1)			NA