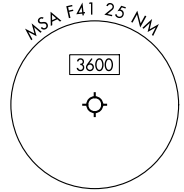


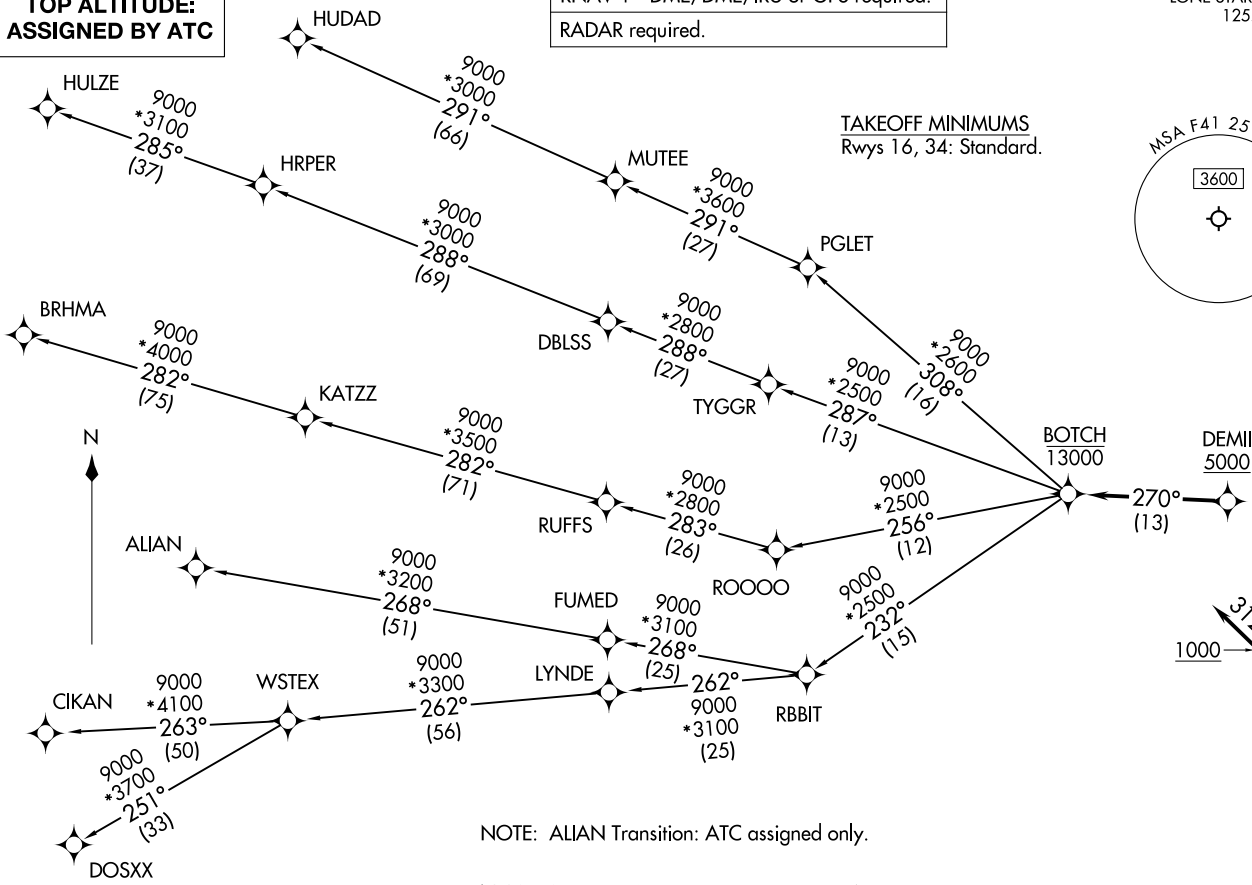
RNAV 1 - DME/DME/IRU or GPS required.
RADAR required.

LONE STAR DEP CON
125.2 343.65
CTAF
122.9

TAKEOFF MINIMUMS
Rwys 16, 34: Standard.



TOP ALTITUDE:
ASSIGNED BY ATC



NOTE: ALIAN Transition: ATC assigned only.

(CONTINUED ON FOLLOWING PAGE)

NOTE: Chart not to scale.

BOTCH TWO DEPARTURE (RNAV)
(BOTCH2.BOTCH) 14MAY26

ENNIS, TEXAS
ENNIS MUNI (F41)

(BOTCH2.BOTCH) 26134
BOTCH TWO DEPARTURE (RNAV)

AL-6830 (FAA)
ENNIS MUNI (F41)
ENNIS, TEXAS

BOTCH TWO DEPARTURE (RNAV)



DEPARTURE ROUTE DESCRIPTION

TAKEOFF RUNWAY 16: Climb on heading 158° to 1000, then on heading 312° or as assigned by ATC, for vectors to cross DEMII at or above 5000, thence. . .

TAKEOFF RUNWAY 34: Climb on heading 338° to 1000, then on heading 312° or as assigned by ATC, for vectors to cross DEMII at or above 5000, thence. . .

. . . on track 270° to cross BOTCH at or below 13000, then on (transition). Maintain ATC assigned altitude, expect filed altitude 10 minutes after departure.

ALIAN TRANSITION (BOTCH2.ALIAN)

BRHMA TRANSITION (BOTCH2.BRHMA)

CIKAN TRANSITION (BOTCH2.CIKAN)

DOSXX TRANSITION (BOTCH2.DOSXX)

HUDAD TRANSITION (BOTCH2.HUDAD)

HULZE TRANSITION (BOTCH2.HULZE)

WSTEX TRANSITION (BOTCH2.WSTEX)

SC-2, 14 MAY 2026 to 11 JUN 2026

SC-2, 14 MAY 2026 to 11 JUN 2026