

VORTAC CQY 114.8 Chan 95	APP CRS 285°	Rwy Idg TDZE Apt Elev N/A N/A 500
--	------------------------	--

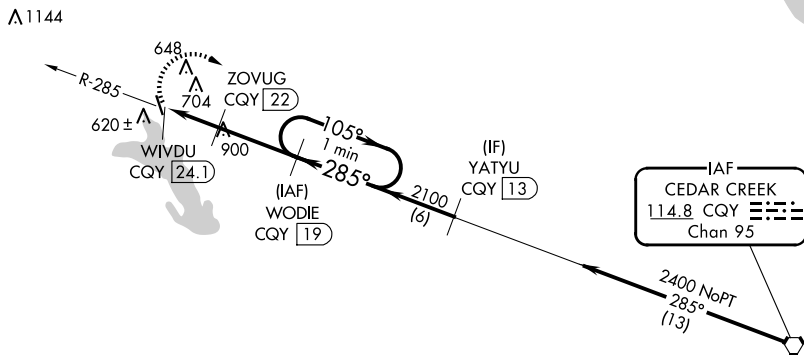
VOR/DME-A

ENNIS MUNI (F41)

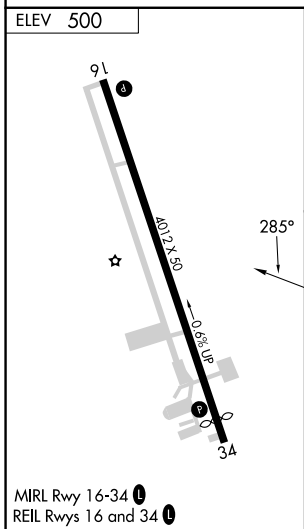
NA When local altimeter setting not received, use Midlothian/Waxahachie altimeter setting and increase all MDAs 40 feet and visibility Cat C ¼ SM.

MISSED APPROACH: Climbing right turn to 2400 on CQY R-285 to WODIE/19 DME and hold.

LNC AWOS-3PT 118.975	LONE STAR APP CON 125.2 343.65	CTAF 122.9
--------------------------------	--	----------------------



Procedure NA for arrival at CQY VORTAC airway radials 234 CW 263.



ENNIS, TEXAS
Amdt 1B 16JUN22

32°20'N-96°40'W

ENNIS MUNI (F41)

VOR/DME-A

CATEGORY	A	B	C	D
	1200-1 700 (700-1)	1200-1¼ 700 (700-1¼)	1300-2¼ 800 (800-2¼)	NA

2400	WODIE CQY 19	WODIE CQY 19	One Minute Holding Pattern
105°	ZOVUG CQY 22	2400	
285°	WIVDU CQY 24.1	2100	
285°	1420	2100	
	2.1	3 NM	

SC-2, 14 MAY 2026 to 11 JUN 2026

SC-2, 14 MAY 2026 to 11 JUN 2026