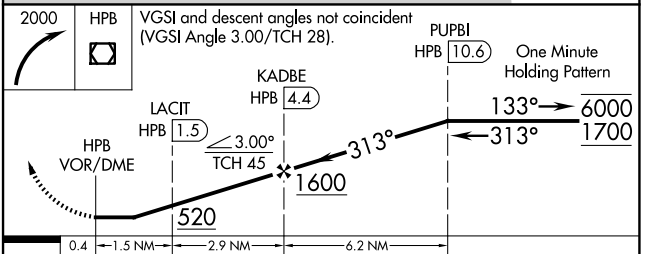
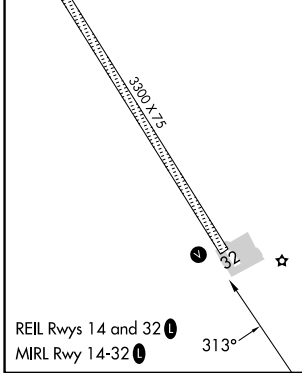
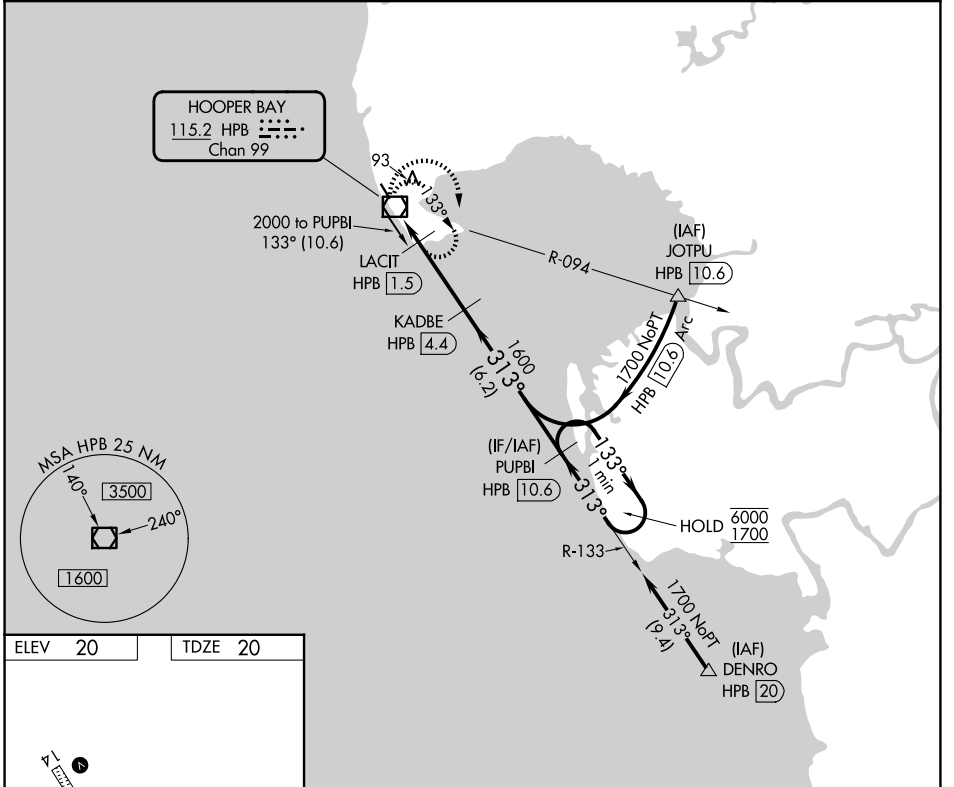


VOR/DME HPB 115.2 Chan 99	APP CRS 313°	Rwy Ldg TDZE Apt Elev	3300 20 20
---	------------------------	-----------------------------	---------------------------------------

VOR RWY 32
HOOPER BAY (HPB) (PAHP)

DME required.	MISSED APPROACH: Climbing right turn to 2000 in HPB VOR/DME holding pattern.
<p>▼ Rwy 32 helicopter visibility reduction below 1 SM NA.</p> <p>▲ Straight-in Rwy 32 NA at night, Circling Rwy 32 NA at night.</p>	

AWOS-3P 135.1	ANCHORAGE CENTER 124.5	KENAI RADIO 122.4	CTAF 123.0
-------------------------	----------------------------------	-----------------------------	----------------------



CATEGORY	A	B	C	D
S-32	420-1	400 (400-1)	420-1 $\frac{1}{8}$	400 (400-1 $\frac{1}{8}$)
CIRCLING	420-1 400 (400-1)	480-1 460 (500-1)	480-1 $\frac{1}{2}$ 460 (500-1 $\frac{1}{2}$)	580-2 560 (600-2)

AK, 14 MAY 2026 to 09 JUL 2026

AK, 14 MAY 2026 to 09 JUL 2026