

APP CRS <b>240°</b>	Rwy Ldg TDZE Apt Elev	<b>3301</b> <b>1213</b> <b>1215</b>
------------------------	-----------------------------	---

# RNAV (GPS) RWY 24

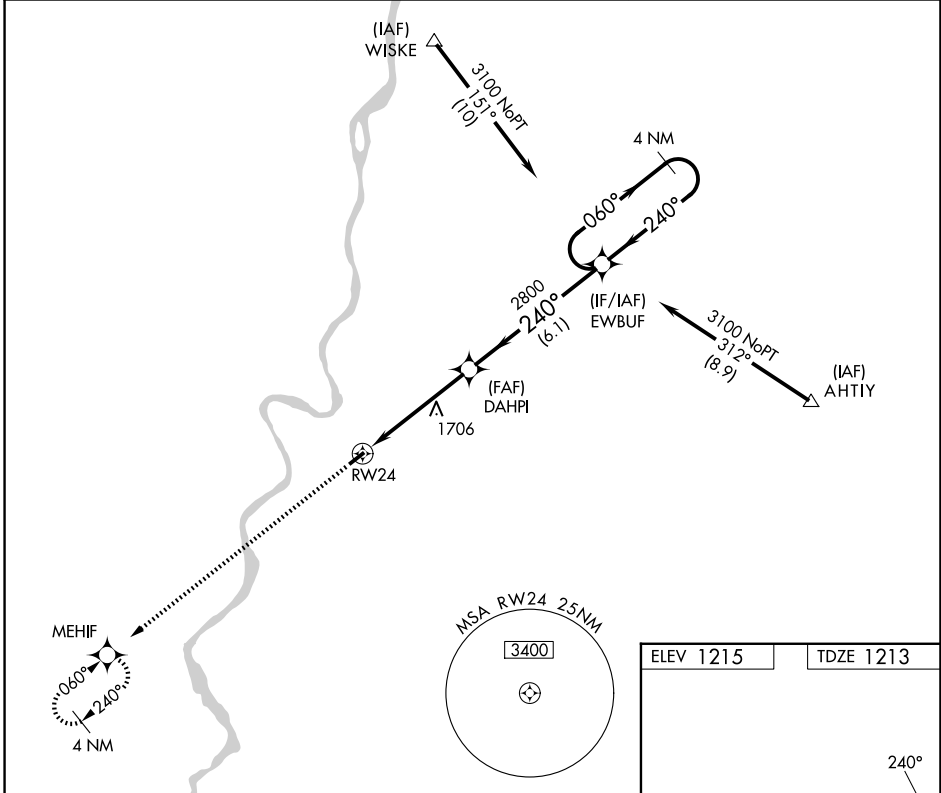
MARSHALL COUNTY (MPG)

RNP APCH.

When local altimeter setting not received, use Wheeling altimeter setting and increase all MDA 60 feet. Rwy 24 helicopter visibility reduction below  $\frac{3}{4}$  SM NA.

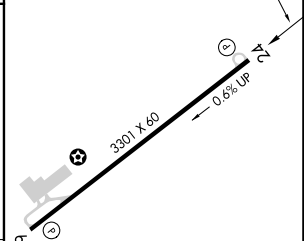
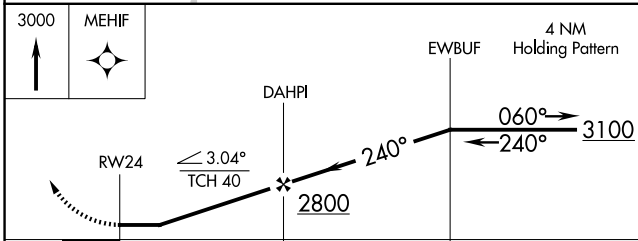
MISSED APPROACH: Climb to 3000 direct MEHIF and hold.

AWOS-3 <b>119.05</b>	CLEVELAND CENTER <b>126.95 239.30</b>	UNICOM <b>122.7 (CTAF) 0</b>
-------------------------	--	---------------------------------



NE-4, 14 MAY 2026 to 11 JUN 2026

NE-4, 14 MAY 2026 to 11 JUN 2026



CATEGORY	A	B	C	D
LNVA MDA	1960-1 747 (800-1)	1960-1¼ 747 (800-1¼)	1960-2¼ 747 (800-2¼)	NA
CIRCLING	1960-1 745 (800-1)	1960-1¼ 745 (800-1¼)	1960-2¼ 745 (800-2¼)	NA

ELEV 1215	TDZE 1213
-----------	-----------

MIRL Rwy 6-24 0