

WAAS CH 42933 W20A	APP CRS 198°	Rwy Ldg 4150 TDZE 874 Apt Elev 878
--	------------------------	---

RNAV (GPS) RWY 20

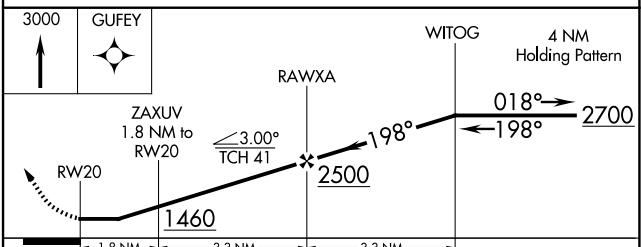
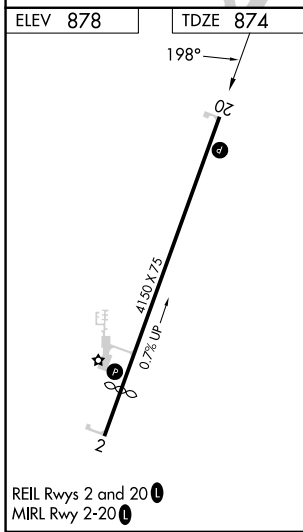
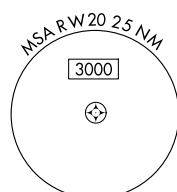
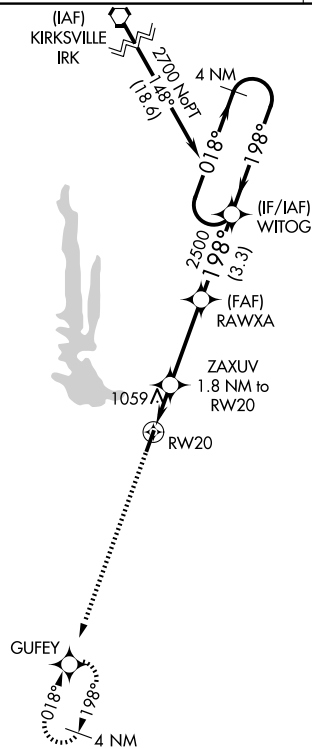
MACON-FOWER MEML (K89)

NA DME/DME RNP-0.3 NA. Use Moberly altimeter setting; when not received, use Columbia altimeter setting and increase all MDA 100 feet. Helicopter visibility reduction below 1 SM NA. Night landing: Rwy 20 NA.

MISSED APPROACH: Climb to 3000 direct GUFY and hold.

MBY AWOS-3PT 120.025	KANSAS CITY CENTER 132.6 370.9	UNICOM 122.8 (CTAF) 0
--------------------------------	--	---------------------------------

Procedure NA for arrival on IRK VORTAC airway radials 059 CW 237.



CATEGORY	A	B	C	D
LP MDA	1340-1	466 (500-1)		NA
LNAV MDA	1360-1	486 (500-1)		NA
CIRCLING	1400-1 522 (600-1)	1560-1 682 (700-1)		NA

NC-3, 14 MAY 2026 to 11 JUN 2026

NC-3, 14 MAY 2026 to 11 JUN 2026