

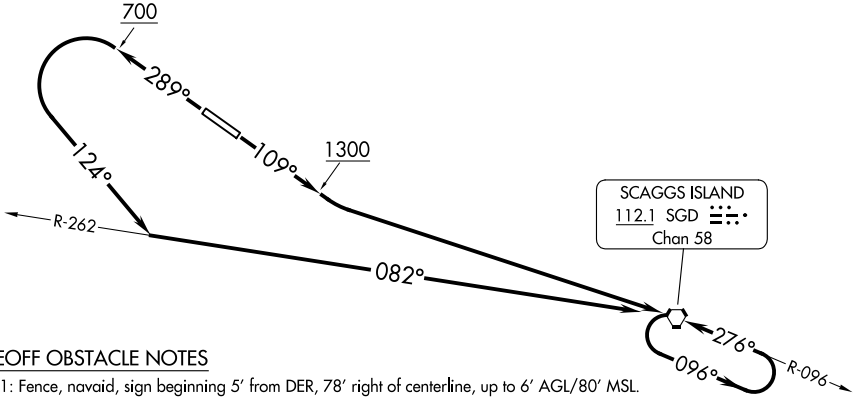
SCAGGS ISLAND ONE DEPARTURE (OBSTACLE)

PETALUMA MUNI (O69)
PETALUMA, CALIFORNIA

TAKEOFF MINIMUMS

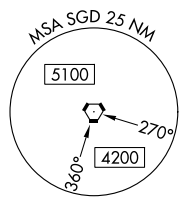
Rwy 11: Standard with minimum climb of 245'/NM to 1500 or 3000-3 for VCOA.
Rwy 29: 300-1½ or standard with minimum climb of 290'/NM to 400.

OAKLAND CENTER
127.8 353.5
AWOS-3P
132.325
CTAF
122.7



TAKEOFF OBSTACLE NOTES

- Rwy 11: Fence, navaid, sign beginning 5' from DER, 78' right of centerline, up to 6' AGL/80' MSL.
Building 8' from DER, 248' left of centerline, 81' MSL.
Trees beginning 25' from DER, 429' left of centerline, up to 114' MSL.
Trees beginning 319' from DER, 399' left of centerline, up to 120' MSL.
Tree 1096' from DER, 778' right of centerline, 116' MSL.
- Rwy 29: Trees, terrain, building beginning 77' from DER, 248' right of centerline, up to 130' MSL.
Buildings beginning 89' from DER, 350' left of centerline, up to 110' MSL.
Tree, buildings beginning 109' from DER, 345' left of centerline, up to 115' MSL.
Trees, vehicle on road, buildings beginning 165' from DER, 298' left of centerline, up to 121' MSL.
Tree 1092' from DER, 504' right of centerline, 143' MSL.
Trees, poles beginning 1098' from DER, 13' right of centerline, up to 162' MSL.
Tree 1280' from DER, 122' left of centerline, 126' MSL.
Tree 1289' from DER, 84' left of centerline, 128' MSL.
Trees beginning 1298' from DER, 75' left of centerline, up to 165' MSL.
Trees, poles beginning 1364' from DER, 18' left of centerline, up to 177' MSL.
Trees, building beginning 1407' from DER, 98' right of centerline, up to 172' MSL.
Tree 5552' from DER, 1841' right of centerline, 257' MSL.
Trees, poles beginning 1537' from DER, 182' right of centerline, up to 176' MSL.
Trees beginning 5556' from DER, 1886' right of centerline, up to 288' MSL.
Tree 5567' from DER, 1991' right of centerline, 289' MSL.
Tree 1.2 NM from DER, 764' right of centerline, up to 313' MSL.



NOTE: Chart not to scale.

DEPARTURE ROUTE DESCRIPTION

TAKEOFF RUNWAY 11: Climb on heading 109° to 1300, then left turn direct SGD VORTAC, thence. . .

TAKEOFF RUNWAY 29: Climb on heading 289° to 700, then climbing left turn heading 124° to intercept SGD VORTAC R-262 to SGD. Do not exceed 210K until established direct SGD VORTAC, thence. . .

VCOA RUNWAY 11: Obtain ATC approval for VCOA when requesting IFR clearance. Climb in visual conditions to cross Petaluma Airport southeast bound at or above 2700, then on SGD VORTAC R-276 to SGD at or above MEA for route of flight.

. . . continue climb in SGD VORTAC holding pattern to cross SGD VORTAC at or above MEA for route of flight.

SCAGGS ISLAND ONE DEPARTURE (OBSTACLE)

PETALUMA, CALIFORNIA
PETALUMA MUNI(O69)

SW-2, 14 MAY 2026 to 11 JUN 2026

SW-2, 14 MAY 2026 to 11 JUN 2026