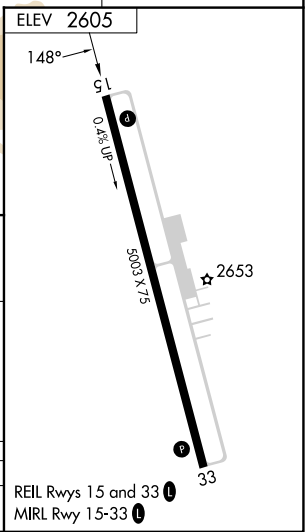
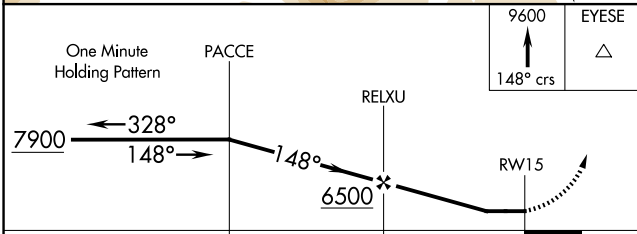
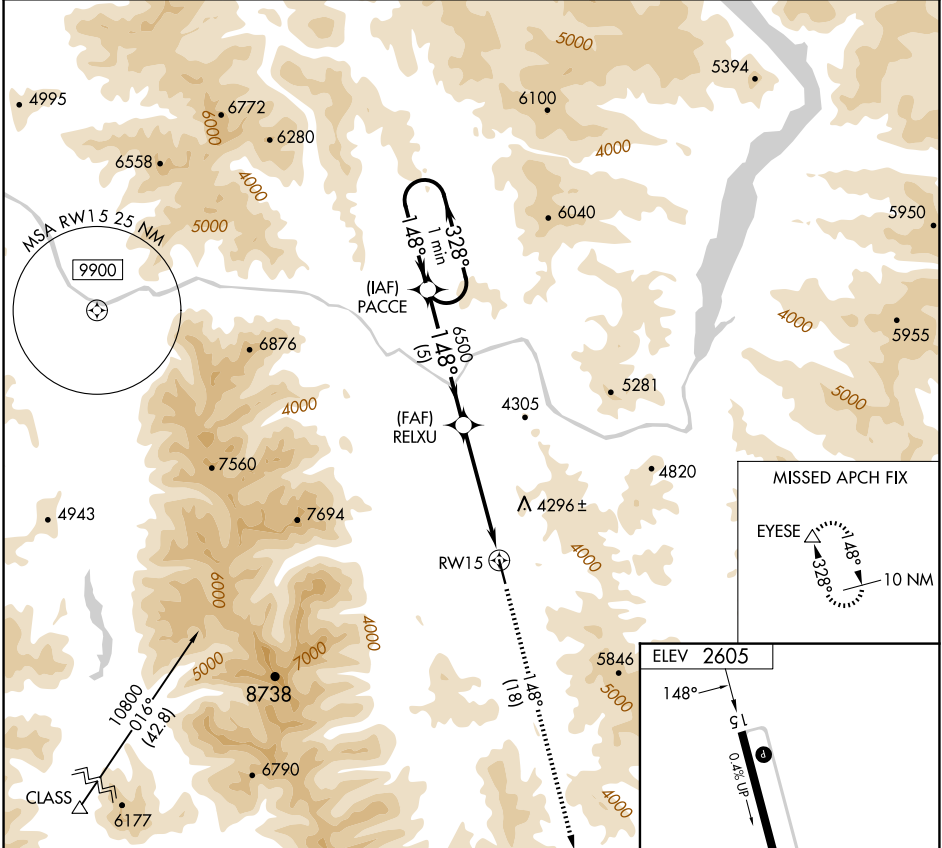


APP CRS <b>148°</b>	Rwy Ldg TDZE Apt Elev	<b>N/A</b> <b>N/A</b> <b>2605</b>
------------------------	-----------------------------	---

# GPS-A LIBBY (S59)

<b>NA</b>	Procedure NA at night. Rwy 15, 33 helicopter visibility reduction below 1 SM NA. When local altimeter setting not received, procedure NA.	MISSED APPROACH: Climb to 9600 on 148° course to EYESE and hold.
-----------	---	--

AWOS-A <b>118.575</b>	SEATTLE CENTER <b>123.95 290.55</b>	UNICOM <b>122.8 (CTAF) 0</b>
--------------------------	--	---------------------------------



CATEGORY	A	B	C	D
CIRCLING	5240-1¼ 2635 (2700-1¼)	5240-1½ 2635 (2700-1½)	NA	

REIL Rwys 15 and 33 **0**  
MIRL Rwy 15-33 **0**

NW-1, 14 MAY 2026 to 11 JUN 2026

NW-1, 14 MAY 2026 to 11 JUN 2026