

WAAS CH 69547 W27A	APP CRS 274°	Rwy Ldg TDZE Apt Elev	7000 7097 7135
--	------------------------	-----------------------------	---

RNAV (GPS) RWY 27

MAMMOTH YOSEMITE (MMH)

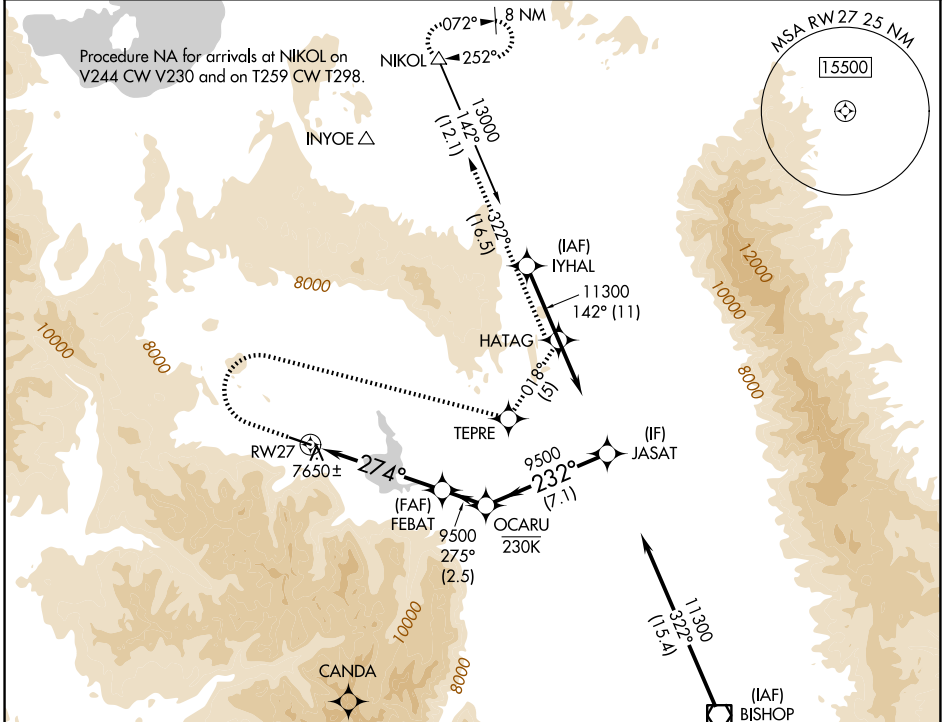
RNP APCH - GPS.

▼ When local altimeter setting not received, procedure NA. Baro-VNAV NA. Circling NA south of Rwy 9-27.

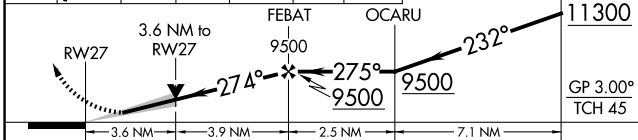
MISSED APPROACH: Climb to 8100 then climbing right turn to 13000 direct TEPRE and on track 018° to HATAG and on track 322° to NIKOL and hold.

*Missed approach requires minimum climb of 300 feet per NM to 8400.

AWOS-3PT 118.05	OAKLAND CENTER 125.75 284.65	UNICOM 122.8 (CTAF) 1
---------------------------	--	---------------------------------

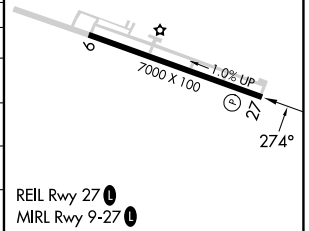


8100	13000	TEPRE	tr 018°	HATAG	tr 322°	NIKOL	JASAT
------	-------	-------	---------	-------	---------	-------	-------



ELEV 7135	D	TDZE 7097
-----------	---	-----------

CATEGORY	A	B	C	D
LPV DA*	7606-1 ³ / ₈ 509 (500-1 ³ / ₈)			NA
LPV DA	7644-1 ⁵ / ₈ 547 (600-1 ⁵ / ₈)	7696-1 ³ / ₄ 599 (600-1 ³ / ₄)	7819-2 722 (700-2)	NA
LNAV/VNAV DA	8085-4 988 (1000-4)	8124-4 1027 (1000-4)	8247-5 1150 (1200-5)	NA
LNAV MDA	8260-1 ¹ / ₄ 1163 (1200-1 ¹ / ₄)	8260-1 ¹ / ₂ 1163 (1200-1 ¹ / ₂)	8320-3 1223 (1200-3)	NA
CIRCLING	8260-1 ¹ / ₄ 1125 (1200-1 ¹ / ₄)	8260-1 ¹ / ₂ 1125 (1200-1 ¹ / ₂)	8540-3 1405 (1500-3)	NA



SW-2, 14 MAY 2026 to 11 JUN 2026

SW-2, 14 MAY 2026 to 11 JUN 2026