

APP CRS	Rwy Ldg	3205
188°	TDZE	287
	Apt Elev	287

RNAV (GPS) RWY 19

MADISONVILLE MUNI (51R)

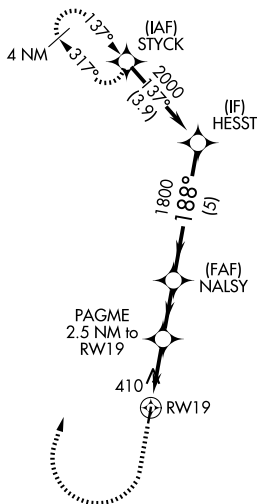
RNP APCH - GPS.

▽ Procedure NA at night. Rwy 19 helicopter visibility reduction below 1 SM NA. Use UTS altimeter setting.

▲ NA

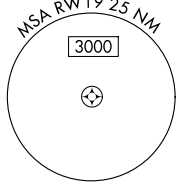
MISSED APPROACH: Climb to 1500 then climbing right turn to 2100 direct STYCK and hold.

UTS ASOS 119.425	HOUSTON CENTER 134.8 269.6	CTAF 122.9
----------------------------	--------------------------------------	----------------------



ELEV 287	TDZE 287
----------	----------

MIRL Rwy 1-19



1500	2100	STYCK	HESST
↑	↷	✧	
RW19		PAGME 2.5 NM to RW19	NALSY
1120		1800	2000
2.5 NM		2.1 NM	5 NM
CATEGORY	A	B	C D
LNAV MDA	720-1	433 (500-1)	NA

SC-5, 14 MAY 2026 to 11 JUN 2026

SC-5, 14 MAY 2026 to 11 JUN 2026