

WAAS CH <b>53738</b> <b>W10A</b>	APP CRS <b>100°</b>	Rwy Ldg TDZE Apt Elev	<b>5001</b> <b>197</b> <b>197</b>
--	------------------------	-----------------------------	---

# RNAV (GPS) RWY 10

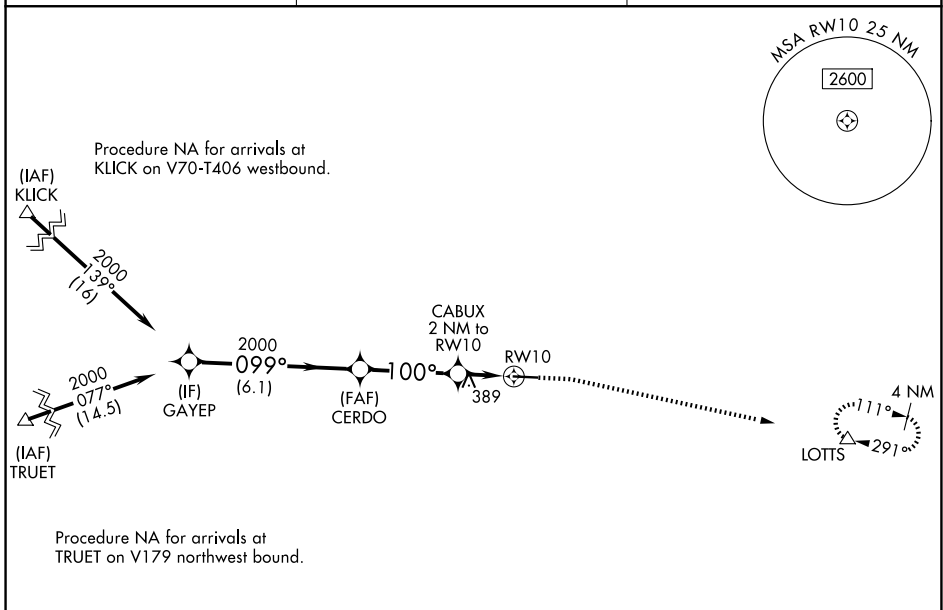
JOHN EDWIN JONES SR FLD/METTER MUNI (MHP)

RNP APCH - GPS.

**⚠** For uncompensated Baro-VNAV systems, LNAV/VNAV NA below -15°C or above 54°C. Baro-VNAV NA when using CWV altimeter setting. Rwy 10 helicopter visibility reduction below 3/4 SM NA. When local altimeter setting not received, use CWV altimeter setting.

**MISSED APPROACH:** Climb to 700 then climbing right turn to 3000 direct LOTTs and hold.

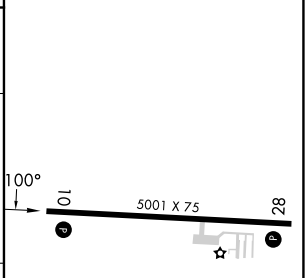
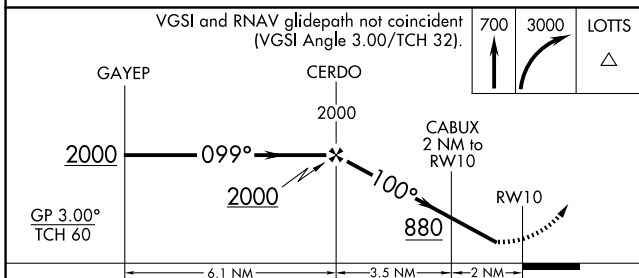
AWOS-3PT <b>120.3</b>	JACKSONVILLE CENTER <b>132.925 363.2</b>	UNICOM <b>123.0 (CTAF)</b>
--------------------------	---	-------------------------------



SE-4, 14 MAY 2026 to 11 JUN 2026

SE-4, 14 MAY 2026 to 11 JUN 2026

ELEV 197	TDZE 197
----------	----------



CATEGORY	A	B	C	D
LPV DA		537-1	340 (400-1)	
LNAV/VNAV DA		494-1	297 (300-1)	
LNAV MDA	700-1	503 (600-1)	700-1 3/8	503 (600-1 3/8)
CIRCLING	820-1 623 (700-1)	880-1 683 (700-1)	1060-2 1/2 863 (900-2 1/2)	1060-2 3/4 863 (900-2 3/4)

MIRL Rwy 10-28	REIL Rwy 10
----------------	-------------