


LOC I-LCK 110.1	APP CRS 232°	Rwy Ldg	23L	23R
		TDZE	740	743
		Apt Elev	744	744

ILS or LOC RWY 23L

RICKENBACKER INTL (LCK)

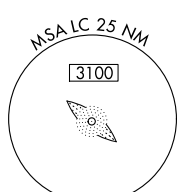
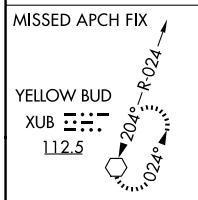
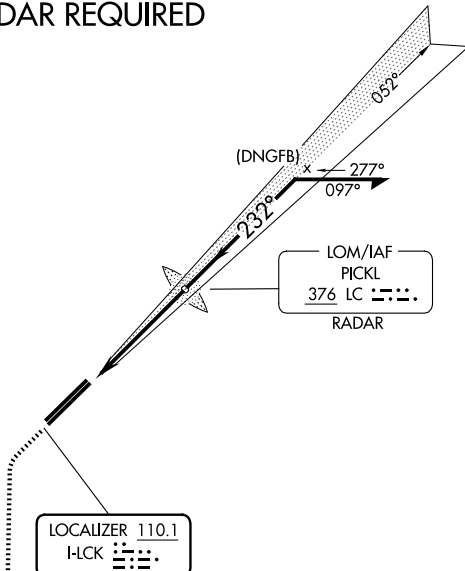
⚠ Circling NA northwest of Rwy 5L-23R. When local altimeter setting not received, use John Glenn Columbus Intl altimeter setting: increase DA to 975 feet; increase all MDAs 40 feet and S-LOC 23L visibility Cats C/D to RVR 5500 and Circling visibility Cat D to 2 1/4 SM. Autopilot coupled approach NA below 1000 MSL.

MALSR  MISSED APPROACH: Climb to 3000, then left turn direct XUB VOR and hold.

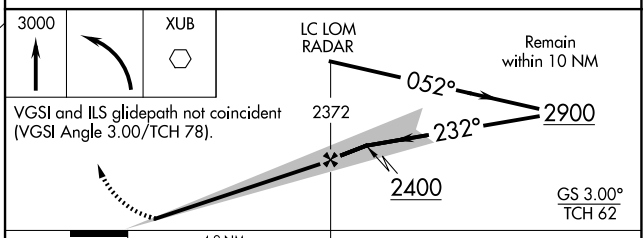
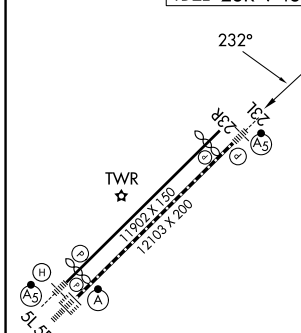
ATIS 132.75	COLUMBUS APP CON 134.0 279.6	RICK TOWER 120.05 348.4	GND CON 125.275 275.8
-----------------------	--	-----------------------------------	---------------------------------



RADAR REQUIRED



ELEV 744	D	TDZE 23L 740	TDZE 23R 743
----------	----------	--------------	--------------



TDZL/RCLS Rwy 5R					
REIL Rwy 23R					
HIRL Rwys 5L-23R and 5R-23L					
FAF to MAP 4.9 NM					
Knots	60	90	120	150	180
Min:Sec	4:54	3:16	2:27	1:58	1:38
CATEGORY	A	B	C	D	
S-ILS 23L	940/24		200 (200-1/2)		
S-LOC 23L	1 220/24 480 (500-1/2)		1 220/50 480 (500-1)		
SIDESTEP RWY 23R	1 220-1 477 (500-1)		1 220-1 1/2 477 (500-1/2)		1 220-2 477 (500-2)
CIRCLING	1 240-1 496 (500-1)		1 280-1 1/2 536 (600-1/2)		1 400-2 656 (700-2)