

RNAV (GPS) RWY 26

FRANCISCO MANGLONA BORJA/TINIAN INTL (TNI)(PGWT)

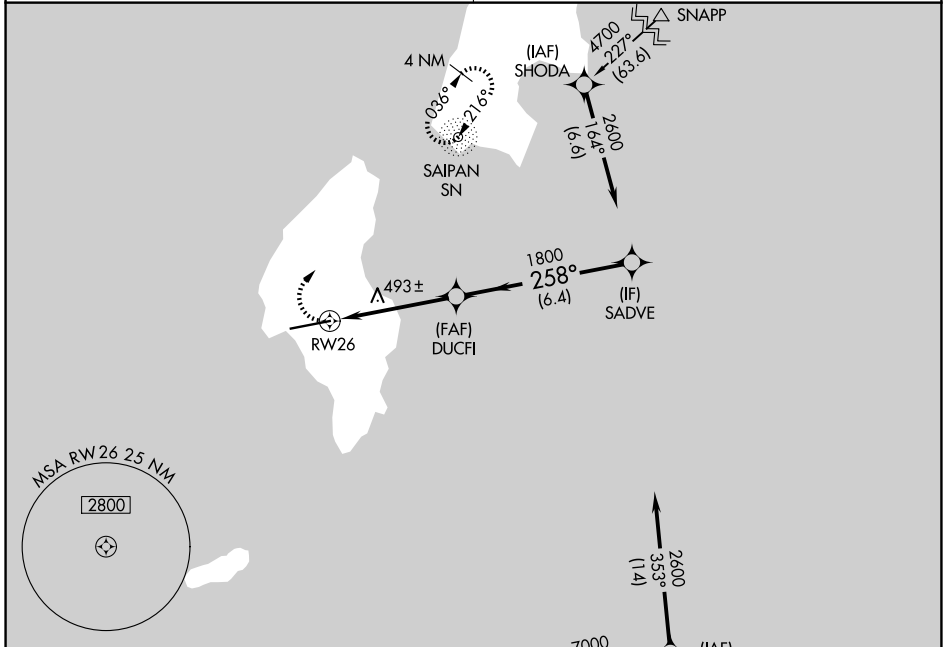
APP CRS	Rwy Ldg	8600
258°	TDZE	270
	Apt Elev	270

RNP APCH.
 ▼ Obtain local altimeter setting on CTAF; when not received, use Saipan altimeter setting.
 ▲ VDP NA when using Saipan altimeter setting.

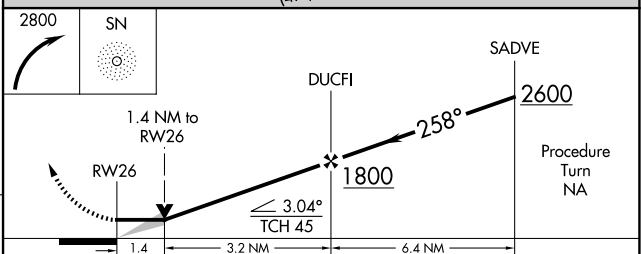
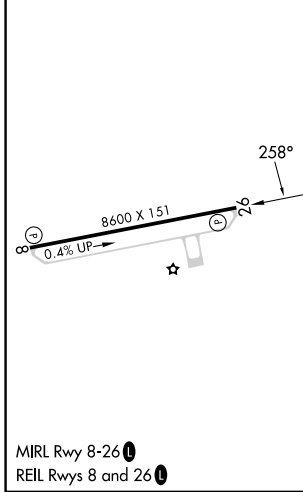
MISSED APPROACH: Climbing right turn to 2800 direct SN NDB and hold, continue climb-in-hold to 2800.

GUAM CERAP
118.4 290.5

SAIPAN RADIO
123.6 (CTAF)



ELEV	270	D	TDZE	270
------	-----	----------	------	-----



CATEGORY	A	B	C	D
LNAV MDA	760-1	490 (500-1)	760-1¼ 490 (500-1¼)	760-1½ 490 (500-1½)
CIRCLING	760-1 490 (500-1)	860-1 590 (600-1)	1000-2 730 (800-2)	1060-2½ 790 (800-2½)
SAIPAN ALTIMETER SETTING MINIMUMS				
LNAV MDA	780-1	510 (600-1)	780-1½	510 (600-1½)
CIRCLING	800-1 530 (600-1)	900-1 630 (700-1)	1040-2¼ 770 (800-2¼)	1100-2¾ 830 (900-2¾)

MIRL Rwy 8-26
 REL Rws 8 and 26

FRANCISCO MANGLONA BORJA/TINIAN INTL (TNI)(PGWT)
 15° 00'N-145° 37'E

RNAV (GPS) RWY 26

PAC: 14 MAY 2026 to 09 JUL 2026

PAC: 14 MAY 2026 to 09 JUL 2026