

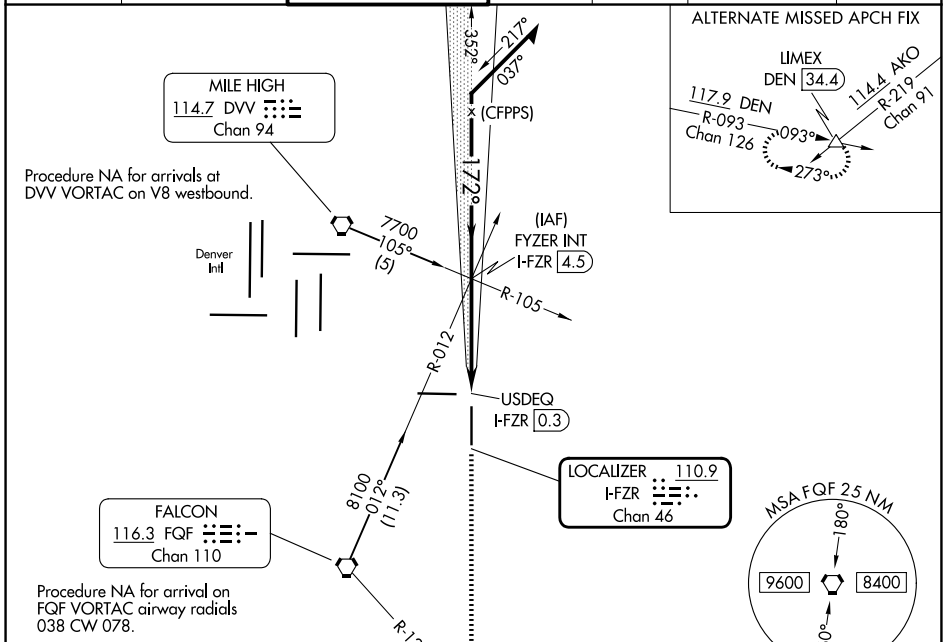
LOC/DME I-FZR 110.9 Chan 46	APP CRS 172°	Rwy Ldg TDZE 8000 5491 Apt Elev 5515
--	------------------------	---

ILS or LOC RWY 17

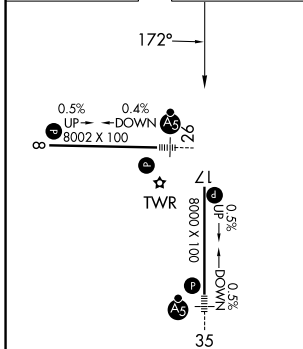
COLORADO AIR AND SPACE PORT (CFO)

MISSED APPROACH: Climb to 8500 on heading 172° and FQG VORTAC R-127 to HUNTN INT/FQG 9.8 DME and hold.

ATIS 119.025	DENVER APP CON 128.25 371.95	SPACE PORT TOWER ★ 120.2 (CTAF)	GND CON 124.7	CLNC DEL 124.7	CLNC DEL 121.75 (When twr closed)	UNICOM 122.95
------------------------	--	---	-------------------------	--------------------------	--	-------------------------



ELEV 5515	TDZE 5491
-----------	-----------



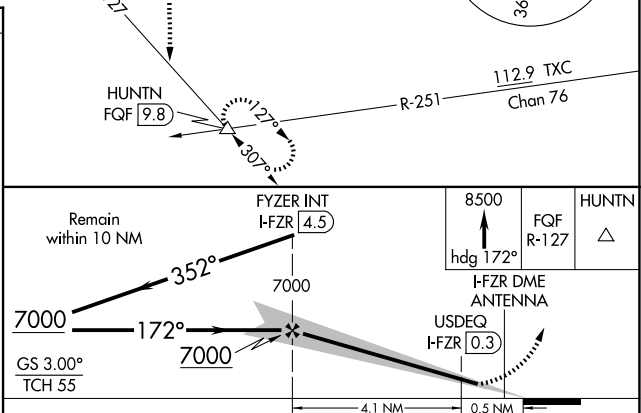
REIL Rwy 8 and 17

HIRL Rwy 8-26

MIRL Rwy 17-35

FAF to MAP 4.1 NM

Knots	60	90	120	150	180
Min:Sec	4:06	2:44	2:03	1:38	1:22



CATEGORY	A	B	C	D
S-ILS 17		5691-¾	200 (200-¾)	
S-LOC 17		5820-1	329 (400-1)	
CIRCLING	6000-1	485 (500-1)	6100-1½ 585 (600-1½)	6300-2½ 785 (800-2½)

SW-1, 14 MAY 2026 to 11 JUN 2026

SW-1, 14 MAY 2026 to 11 JUN 2026