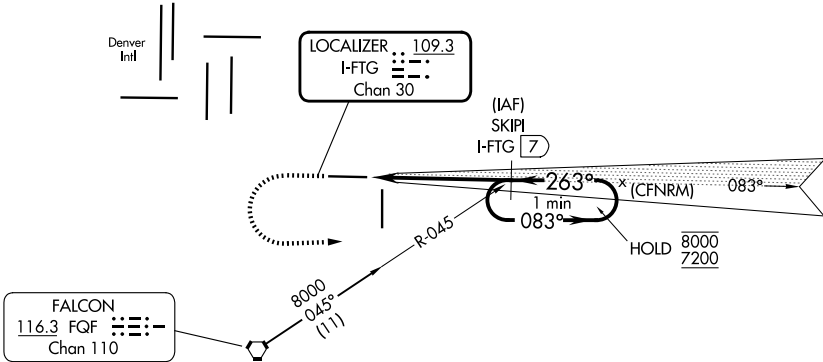


LOC/DME I-FTG 109.3 Chan 30	APP CRS 263°	Rwy Ldg TDZE 8002 5489 Apt Elev 5515
---	------------------------	---

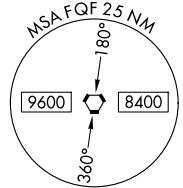
ILS or LOC RWY 26

COLORADO AIR AND SPACE PORT (CFO)

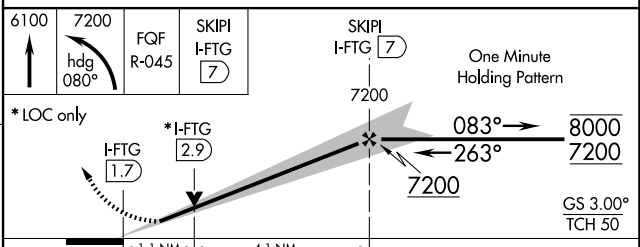
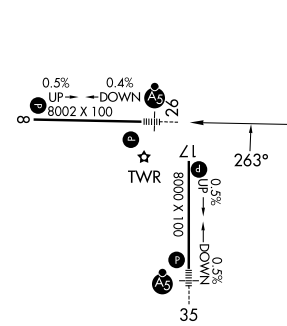
DME required.		MALSR	MISSED APPROACH: Climb to 6100 then climbing left turn to 7200 on heading 080° and on FQG VORTAC R-045 to SKIPI/I-FTG 7 DME and hold.			
▼ For inop ALS, increase S-LOC 26 Cat C/D visibility to 1 1/8 SM. Autopilot coupled approach NA below 6250 MSL. ▲			GND CON 124.7	CLNC DEL 124.7	CLNC DEL 121.75 (When twr closed)	UNICOM 122.95
ATIS 119.025	DENVER APP CON 128.25 371.95	SPACE PORT TOWER * 120.2 (CTAF)				



Procedure NA for arrival on FQG VORTAC airway radials 038 CW 078.



ELEV 5515 TDZE 5489



CATEGORY	A	B	C	D
S-ILS 26	5689-1/2 200 (200-1/2)			
S-LOC 26	5900-1/2 411 (400-1/2)		5900-3/4 411 (400-3/4)	
CIRCLING	6000-1 485 (500-1)		6100-1 1/2 585 (600-1 1/2)	6300-2 1/2 785 (800-2 1/2)

REIL Rwy 8 and 17
HIRL Rwy 8-26
MIRL Rwy 17-35

SW-1, 14 MAY 2026 to 11 JUN 2026

SW-1, 14 MAY 2026 to 11 JUN 2026