

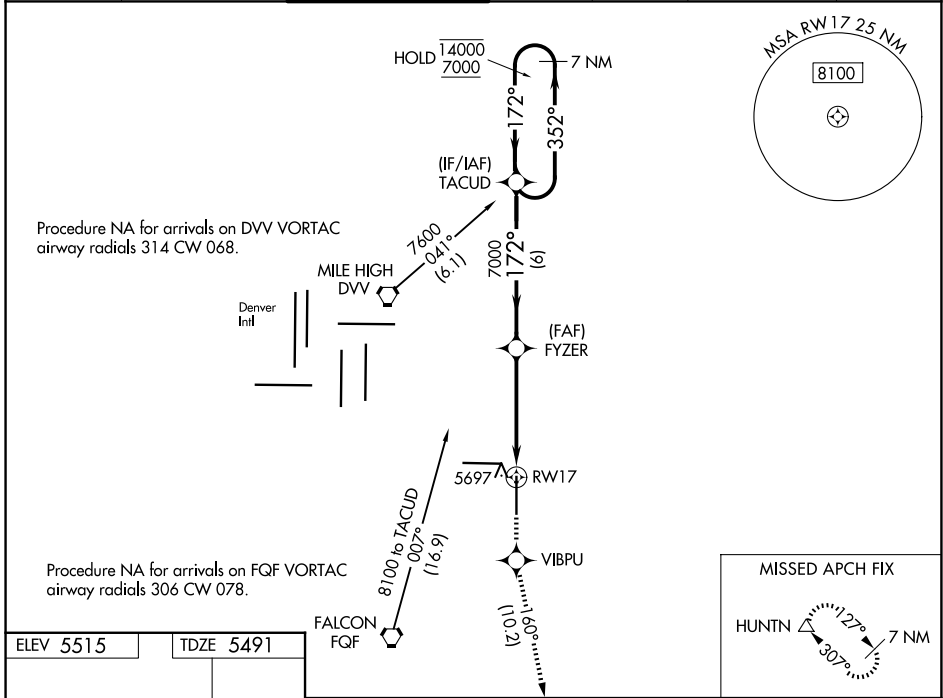
WAAS CH 82209 W17A	APP CRS 172°	Rwy Ldg TDZE Apt Elev	8000 5491 5515
--	------------------------	-----------------------------	---

RNAV (GPS) RWY 17

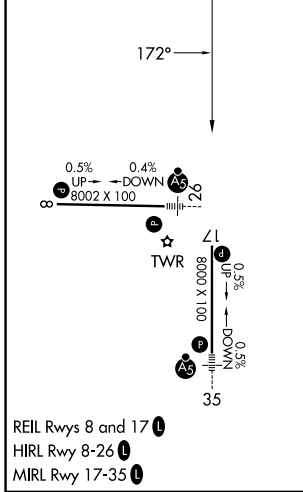
COLORADO AIR AND SPACE PORT (CFO)

RNP APCH-GPS.				MISSED APPROACH: Climb to 8500 direct VIBPU and on track 160° to HUNTN and hold.			
⚠ For uncompensated Baro-VNAV systems, LNAV/VNAV NA below -25°C or above 48°C.							

ATIS 119.025	DENVER APP CON 128.25 371.95	SPACE PORT TOWER ★ 120.2 (CTAF) 0	GND CON 124.7	CLNC DEL 124.7	CLNC DEL 121.75 (When twr closed)	UNICOM 122.95
------------------------	--	---	-------------------------	--------------------------	--	-------------------------



ELEV 5515	TDZE 5491
-----------	-----------



CATEGORY	A	B	C	D
LPV DA	5691- ³ / ₄ 200 (200- ³ / ₄)			
LNAV/VNAV DA	5916-1 ³ / ₈ 425 (500-1 ³ / ₈)			
LNAV MDA	6000-1	509 (500-1)	6000-1 ¹ / ₂	509 (500-1 ¹ / ₂)
CIRCLING	6000-1	485 (500-1)	6100-1 ¹ / ₂ 585 (600-1 ¹ / ₂)	6300-2 ¹ / ₂ 785 (800-2 ¹ / ₂)

SW-1, 14 MAY 2026 to 11 JUN 2026

SW-1, 14 MAY 2026 to 11 JUN 2026