

APP CRS 165°	Rwy Idg 3657
	TDZE 870
	Apt Elev 873

RNAV (GPS) RWY 17

BOURLAND FLD (50F)

RNP APCH - GPS.

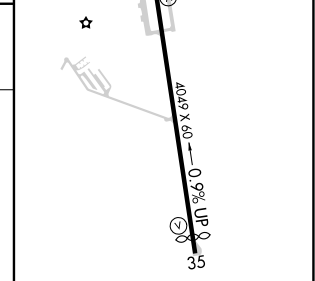
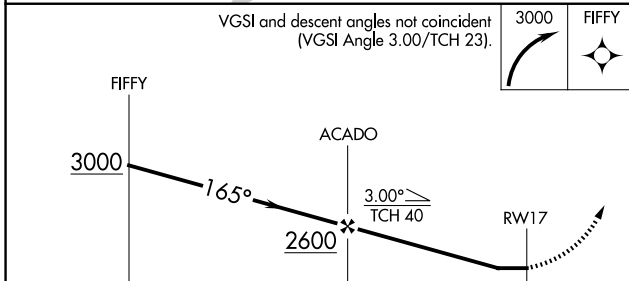
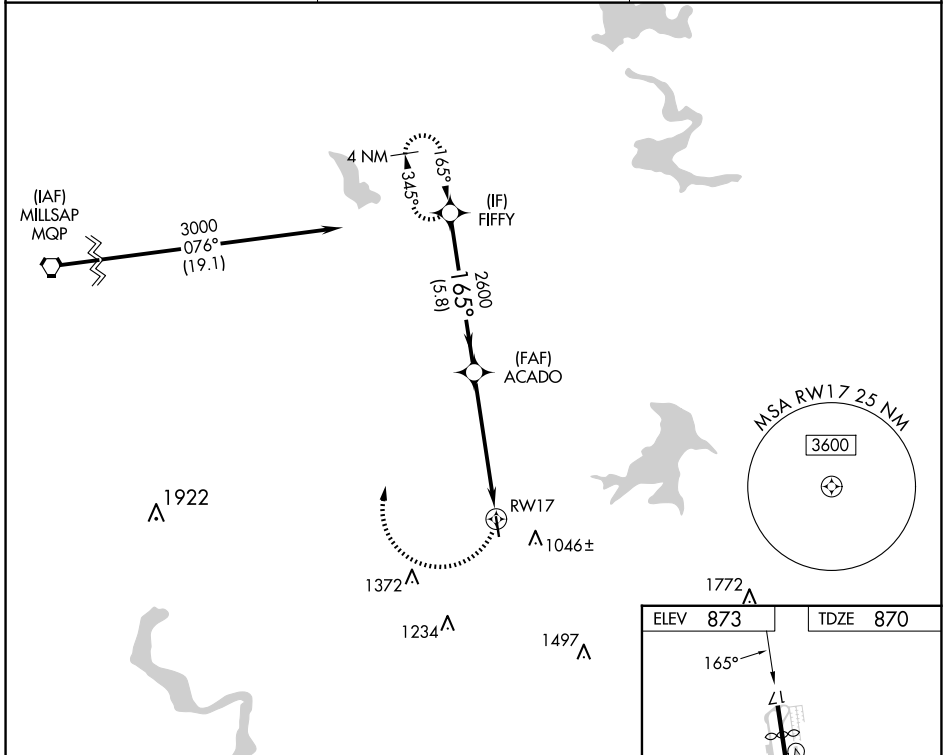
NA Procedure NA at night. Rwy 17 helicopter visibility reduction below 1 SM NA.

MISSED APPROACH: Climbing right turn to 3000 direct FIFFY and hold.

CPT AWOS-3
119,525

LONE STAR APP CON
135,975 379,9

UNICOM
123.0 (CTAF)



CATEGORY	A	B	C	D
LNAV MDA	1520-1	650 (700-1)	1520-1 ⁷ / ₈ 650 (700-1 ⁷ / ₈)	NA

MIRL Rwy 17-35 **0**

SC-2, 14 MAY 2026 to 11 JUN 2026

SC-2, 14 MAY 2026 to 11 JUN 2026