

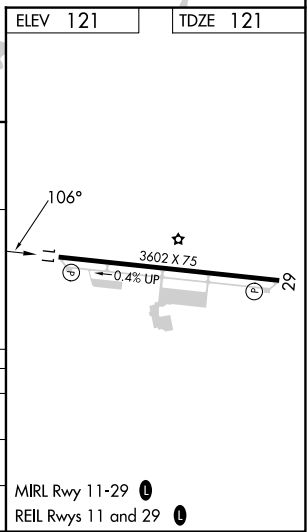
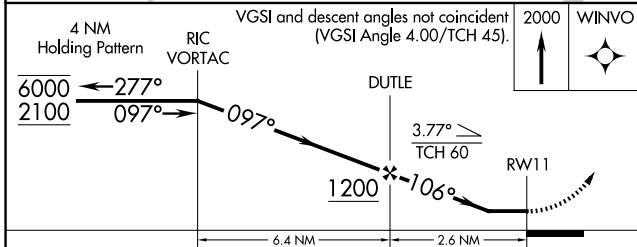
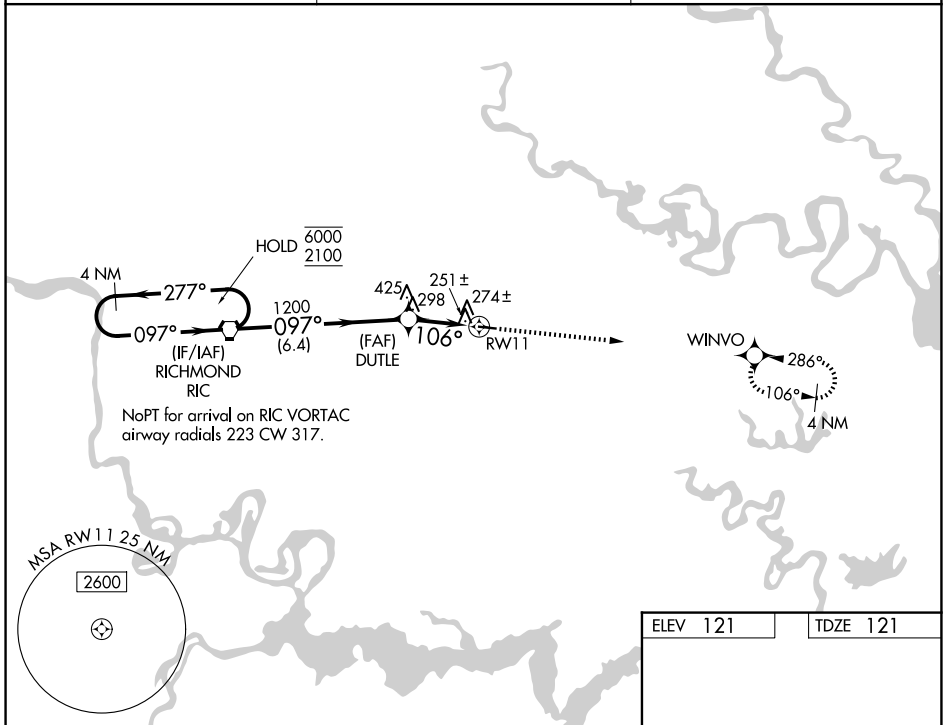
WAAS CH <b>45932</b> <b>W11A</b>	APP CRS <b>106°</b>	Rwy Ldg TDZE Apt Elev	<b>3602</b> <b>121</b> <b>121</b>
--	------------------------	-----------------------------	---

# RNAV (GPS) RWY 11

NEW KENT COUNTY (W96)

RNP APCH - GPS.	MISSED APPROACH: Climb to 2000 direct WINVO and hold.
<p>Procedure NA at night. Rwy 11 helicopter visibility reduction below 1 SM NA.</p> <p>When local altimeter setting not received, use RIC altimeter setting: increase all MDAs 40 feet and LNAV visibility Cat C ½ SM; increase LP and Circling visibility Cat C ¼ SM.</p>	

AWOS-3 <b>119.875</b>	POTOMAC APP CON <b>126.4 282.375</b>	UNICOM <b>122.8 (CTAF)</b>
--------------------------	---	-------------------------------



CATEGORY	A	B	C	D
LP MDA	540-1	419 (500-1)	540-1 1/8 419 (500-1 1/8)	NA
LNAV MDA	560-1	439 (500-1)	560-1 1/4 439 (500-1 1/4)	NA
CIRCLING	620-1	499 (500-1)	760-1 3/4 639 (700-1 3/4)	NA

NE-3, 14 MAY 2026 to 11 JUN 2026

NE-3, 14 MAY 2026 to 11 JUN 2026