

WAAS CH <b>90532</b> <b>W29A</b>	APP CRS <b>286°</b>	Rwy Ldg TDZE Apt Elev	<b>3602</b> <b>120</b> <b>121</b>
--	------------------------	-----------------------------	---

# RNAV (GPS) RWY 29

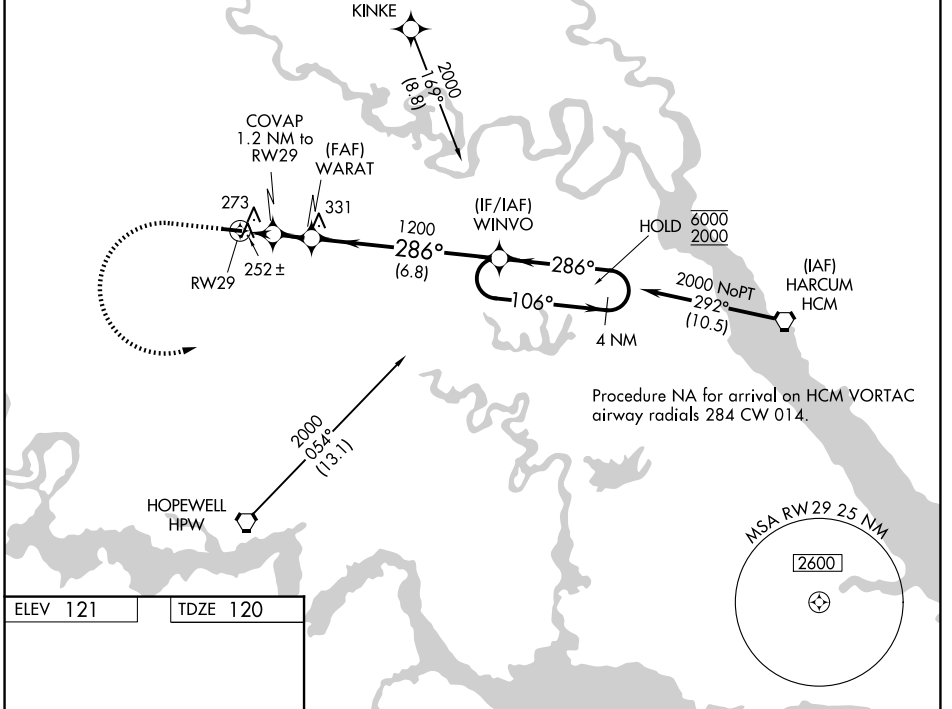
NEW KENT COUNTY (W96)

RNP APCH - GPS.

Rwy 29 helicopter visibility reduction below 1 SM NA.  
 Procedure NA at night. When local altimeter setting not received,  
 use RIC altimeter setting: increase all MDAs 40 feet and LNAV visibility  
 Cat C 1/8 SM; increase LP and Circling visibility Cat C 1/4 SM.

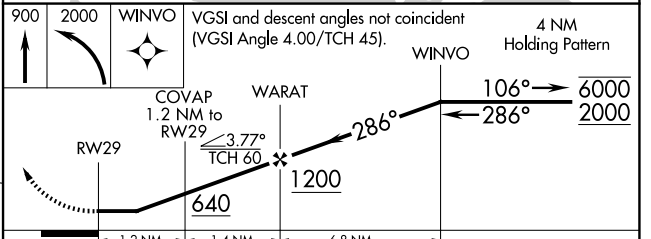
MISSED APPROACH: Climb to 900 then climbing left turn to 2000 direct WINVO and hold.

AWOS-3 <b>119,875</b>	POTOMAC APP CON <b>126,4 282,375</b>	UNICOM <b>122.8 (CTAF) 0</b>
--------------------------	---	---------------------------------



ELEV 121	TDZE 120
----------	----------

MIRL Rwy 11-29 1  
 REIL Rwy 11 and 29 1



CATEGORY	A	B	C	D
LP MDA	540-1	420 (500-1)	540-1 1/8 420 (500-1 1/8)	NA
LNAV MDA	560-1	440 (500-1)	560-1 1/4 440 (500-1 1/4)	NA
CIRCLING	620-1	499 (500-1)	760-1 3/4 639 (700-1 3/4)	NA

NE-3, 14 MAY 2026 to 11 JUN 2026

NE-3, 14 MAY 2026 to 11 JUN 2026