

WAAS CH <b>78302</b> <b>W05A</b>	APP CRS <b>054°</b>	Rwy Ldg TDZE Apt Elev	<b>7300</b> <b>7141</b> <b>7143</b>
--	------------------------	-----------------------------	---

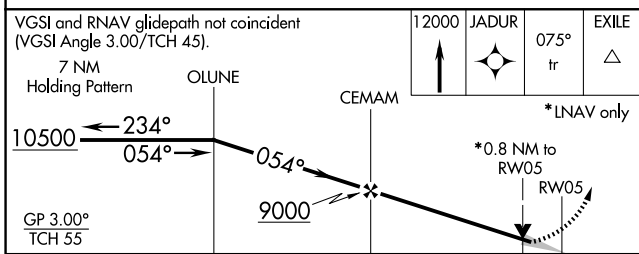
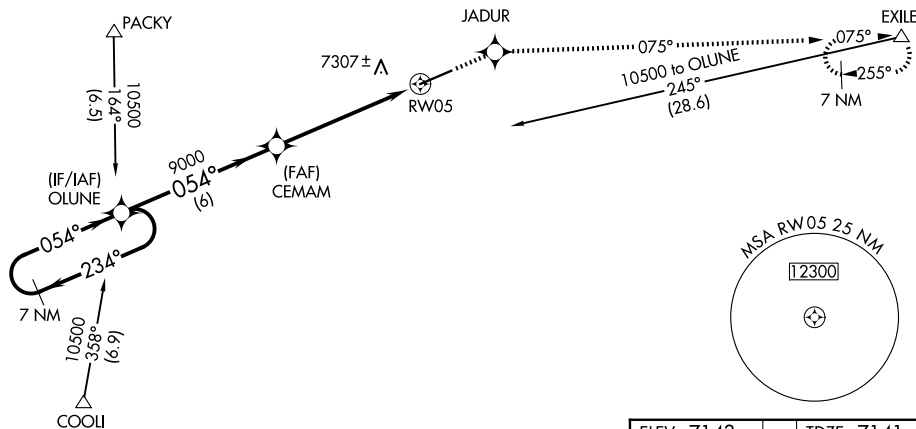
# RNAV (GPS) RWY 5

EVANSTON-UINTA COUNTY BURNS FLD (E V W)

<b>RNP APCH.</b> ▼ If local altimeter setting not received, procedure NA. For uncompensated Baro-VNAV systems, LNAV/VNAV NA below -29°C (-20°F) or above 34°C (94°F).		MISSED APPROACH: Climb to 12000 direct JADUR and via 075° track to EXILE and hold, continue climb-in-hold to 12000.	
ASOS <b>120.0</b>	SALT LAKE CENTER <b>127.7 354.125</b>	GCO <b>121.72</b>	UNICOM <b>123.0 (CTAF) 0</b>

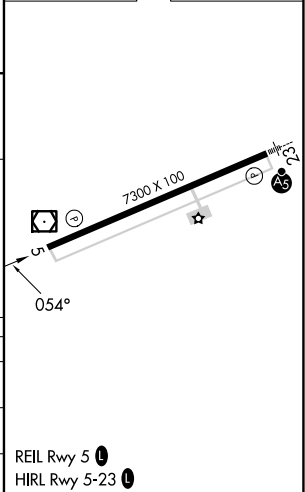
NW-1, 14 MAY 2026 to 11 JUN 2026

NW-1, 14 MAY 2026 to 11 JUN 2026



ELEV 7143	TDZE 7141
-----------	-----------

GP 3.00° TCH 55	OLUNE	CEMAM	RW05	EXILE
	6 NM	4.8 NM	0.8 NM	
CATEGORY	A	B	C	D
LPV DA		7391-3/4	250 (300-3/4)	
LNAV/VNAV DA		7643-13/4	502 (500-13/4)	
LNAV MDA		7440-1	299 (300-1)	



REIL Rwy 5 0  
HIRL Rwy 5-23 0