

AIRPORT DIAGRAM

AL-6859 (FAA)

DOUBLE EAGLE II (A/E/G)
ALBUQUERQUE, NEW MEXICO

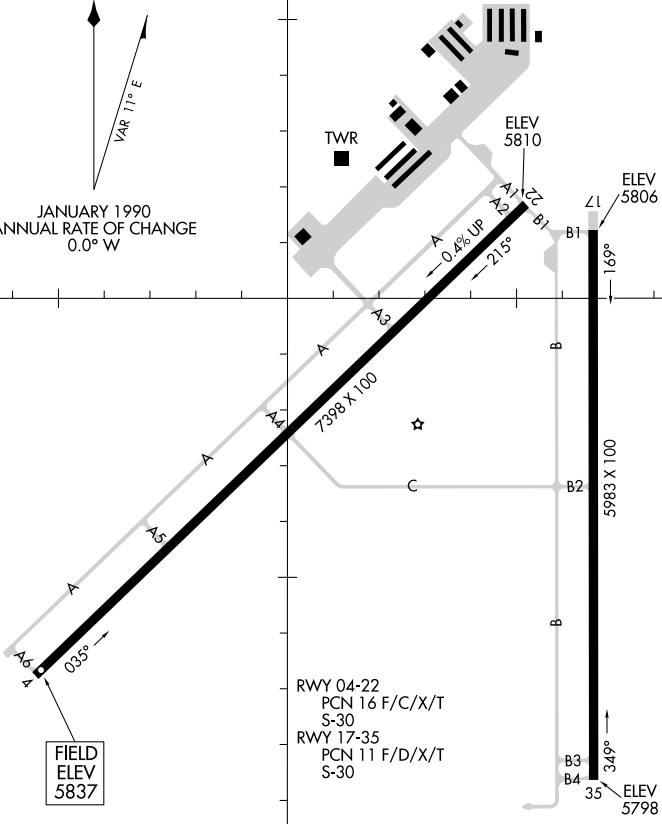
ATIS
 119.025
 DOUBLE EAGLE II*
 120.15
 GND CON
 121.625
 CLNC DEL
 124.8 (When twr closed)



JANUARY 1990
 ANNUAL RATE OF CHANGE
 0.0° W

SW-1, 14 MAY 2026 to 11 JUN 2026

SW-1, 14 MAY 2026 to 11 JUN 2026



RWY 04-22
 PCN 16 F/C/X/T
 S-30
 RWY 17-35
 PCN 11 F/D/X/T
 S-30

FIELD
ELEV
5837

CAUTION: BE ALERT TO RUNWAY CROSSING CLEARANCES.
READBACK OF ALL RUNWAY HOLDING INSTRUCTIONS IS REQUIRED.

106°48'W

106°47'W

35°09'N

35°08'N

AIRPORT DIAGRAM

ALBUQUERQUE, NEW MEXICO
DOUBLE EAGLE II (A/E/G)