

LOC I-AEG 110.1	APP CRS 215°	Rwy Ldg TDZE Apt Elev	7398 5817 5837
---------------------------	------------------------	-----------------------------	---

ILS or LOC RWY 22

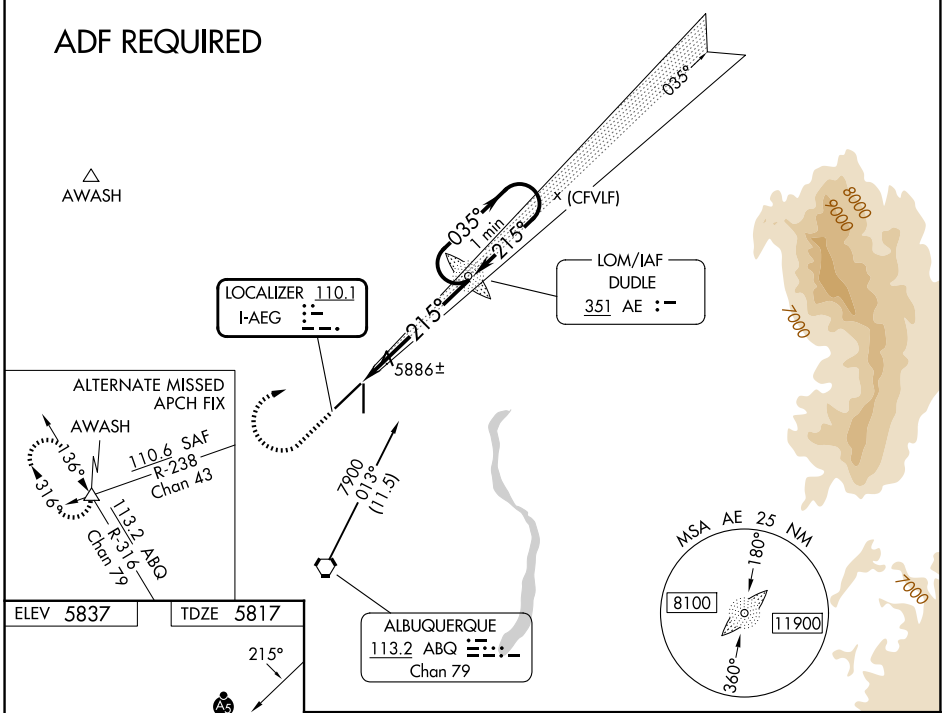
DOUBLE EAGLE II (A/E/G)

NA When local altimeter setting not received, use Albuquerque Intl Suport altimeter setting and increase all DA 94 feet, increase all MDA 100 feet, and increase visibility S-LOC 22 Cats C/D ¼ mile, Circling Cats C/D ½ mile. For inop MALSR when using Albuquerque Intl Suport altimeter setting, increase visibility S-ILS 22 all Cats ⅜ mile.

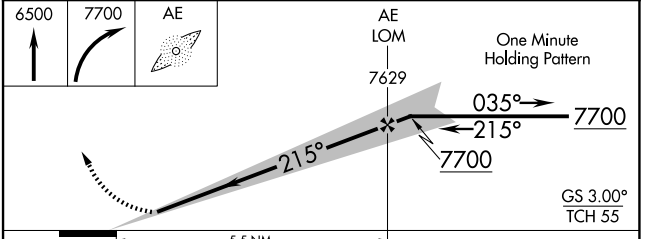
MALSR MISSED APPROACH: Climb to 6500 then climbing right turn 7700 direct DUDLE LOM and hold.

ATIS 119.025	ALBUQUERQUE APP CON 127.4 253.5	DOUBLE EAGLE II TOWER * 120.15 (CTAF) 0	GND CON 121.625
------------------------	---	--	---------------------------

ADF REQUIRED



ELEV 5837	TDZE 5817
<p>TWR</p> <p>215°</p> <p>35</p> <p>0.4% UP</p> <p>5883 X 100</p> <p>7398 X 100</p>	
<p>REL Rwy 17 and 35</p> <p>MIRL Rwy 4-22 and 17-35</p> <p>FAF to MAP 5.5 NM</p>	
Knots	60 90 120 150 180
Min:Sec	5:30 3:40 2:45 2:12 1:50



CATEGORY	A	B	C	D
S-ILS 22	6017-½ 200 (200-½)			
S-LOC 22	6140-½ 323 (400-½)			
CIRCLING	6400-1	563 (600-1)	6420-1½ 583 (600-1½)	6640-2½ 803 (900-2½)

SW-1, 14 MAY 2026 to 11 JUN 2026

SW-1, 14 MAY 2026 to 11 JUN 2026