

| | |
|------------------------|------------------------|
| APP CRS 185° | Rwy Idg 4220 |
| | TDZE 339 |
| | Apt Elev 345 |

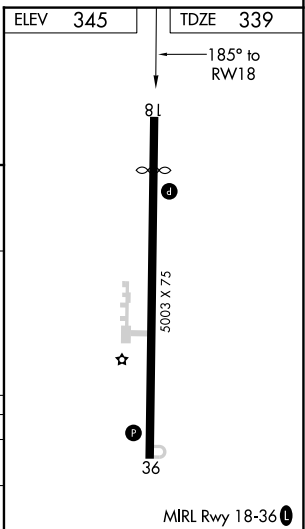
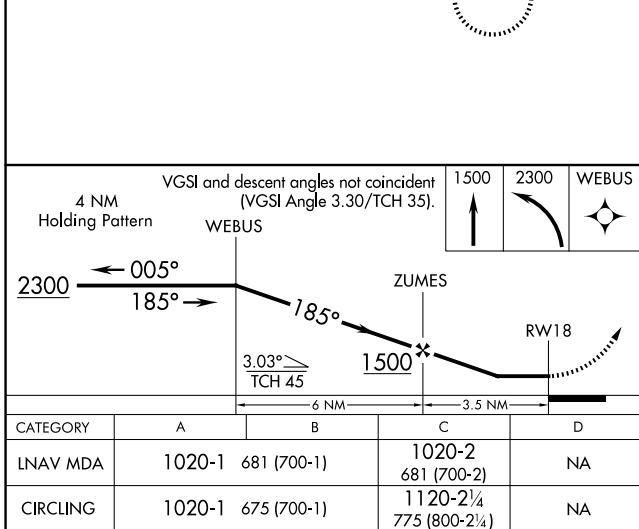
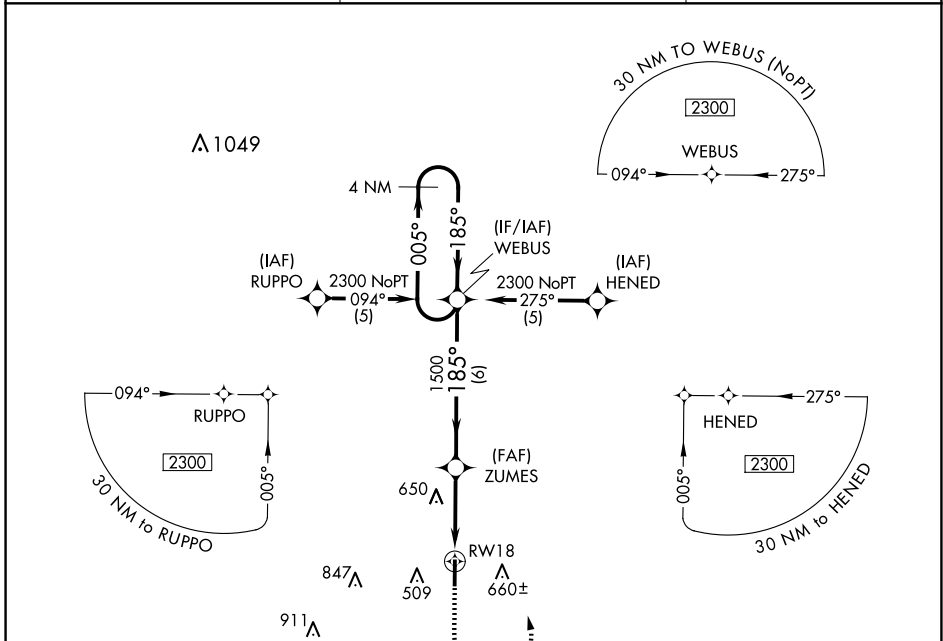
RNAV (GPS) RWY 18

DR C P SAVAGE SR (53A)

NA DME/DME RNP-0.3 NA. Procedure NA at night. Helicopter visibility reduction below 1 SM NA. Use Americus altimeter setting, when not received use Macon altimeter setting and increase all MDA 20 feet.

MISSED APPROACH: Climb to 1500 then climbing left turn to 2300 direct WEBUS and hold.

| | | |
|------------------------------|---|----------------------|
| ACJ AWOS-3 128.375 | ATLANTA APP CON * 124.2 279.6 | CTAF 122.9 |
|------------------------------|---|----------------------|



SE-4, 14 MAY 2026 to 11 JUN 2026

SE-4, 14 MAY 2026 to 11 JUN 2026