

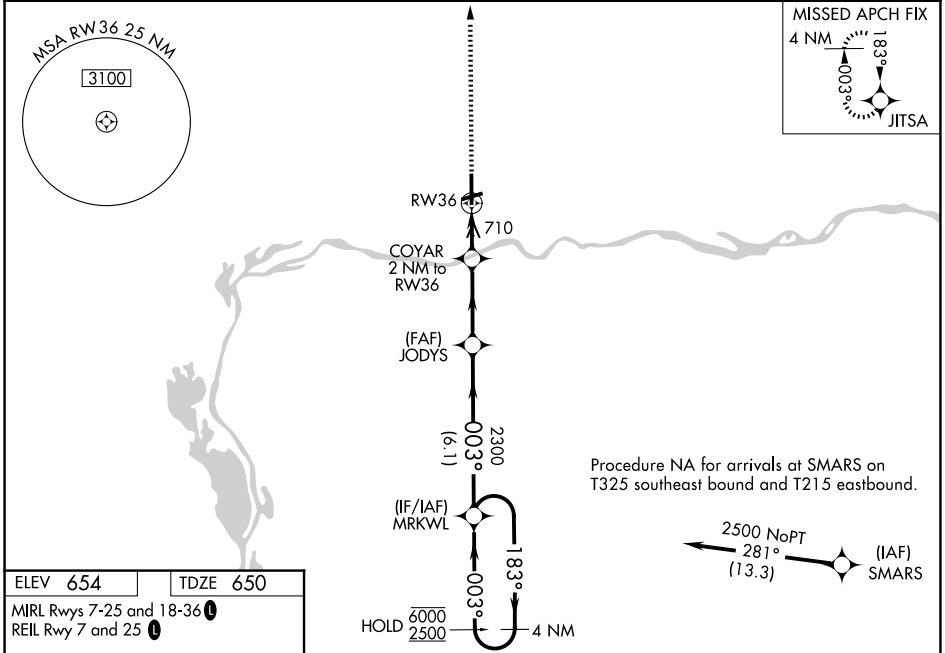
WAAS CH <b>82037</b> <b>W36A</b>	APP CRS <b>003°</b>	Rwy Ldg TDZE <b>650</b> Apt Elev <b>654</b>	<b>5999</b>
--	------------------------	---	-------------

# RNAV (GPS) RWY 36

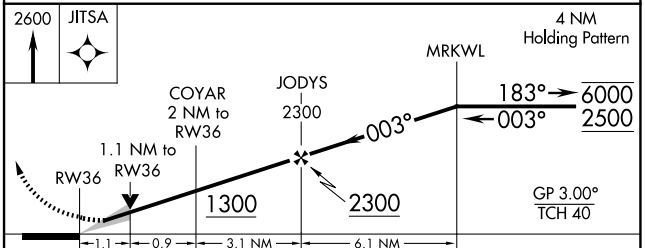
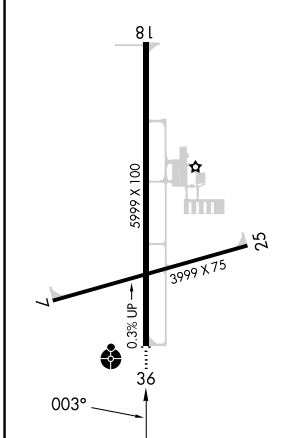
ILLINOIS VALLEY RGNL-WALTER A DUNCAN FLD (VYS)

RNP APCH - GPS.	ODALS	MISSED APPROACH: Climb to 2600 direct JITSA and hold.
<p>For uncompensated Baro-VNAV systems, LNAV/VNAV NA below -16°C or above 54°C. Inop table does not apply.</p>		

AWOS-3 <b>120.025</b>	CHICAGO CENTER <b>123.75 259.1</b>	UNICOM <b>123.0 (CTAF)</b>
--------------------------	---------------------------------------	-------------------------------



ELEV <b>654</b>	TDZE <b>650</b>
MIRL Rwy 7-25 and 18-36	
REIL Rwy 7 and 25	



CATEGORY	A	B	C	D
LPV DA		900-1	250 (300-1)	
LNAV/VNAV DA		900-1	250 (300-1)	
LNAV MDA		1020-1	370 (400-1)	
CIRCLING	1120-1 466 (500-1)	1240-1 586 (600-1)	1260-1¾ 606 (700-1¾)	1460-2½ 806 (900-2½)

EC-3, 14 MAY 2026 to 11 JUN 2026

EC-3, 14 MAY 2026 to 11 JUN 2026