

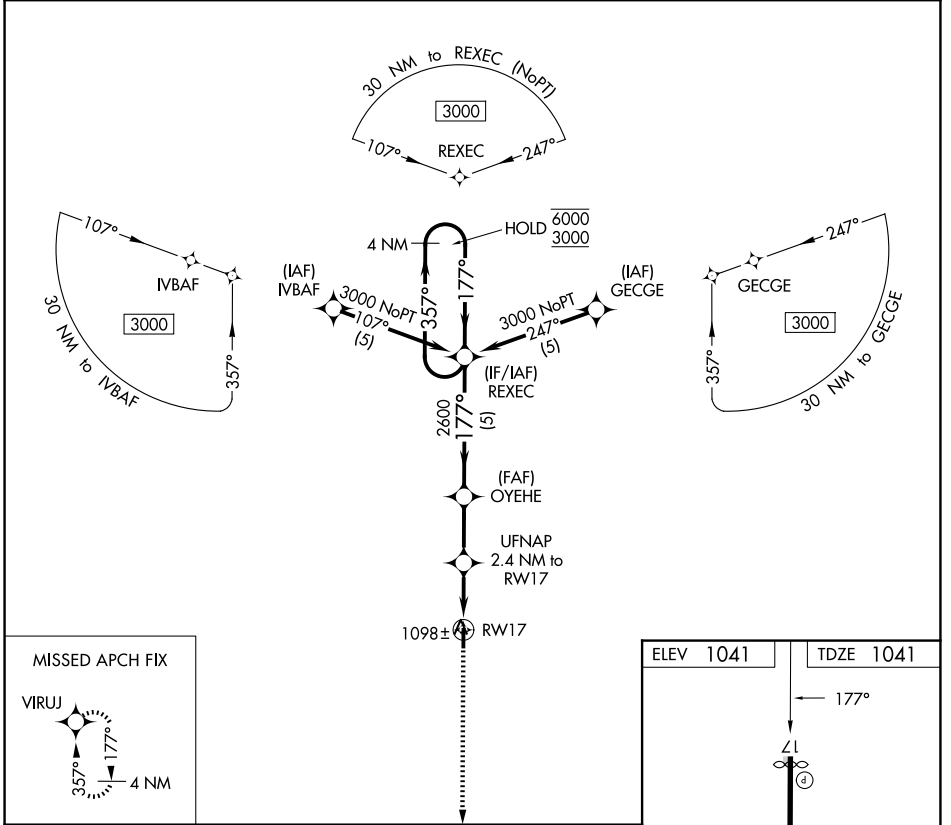
APP CRS	Rwy Ldg	3490
177°	TDZE	1041
	Apt Elev	1041

RNAV (GPS) RWY 17

PRAGUE MUNI (O47)

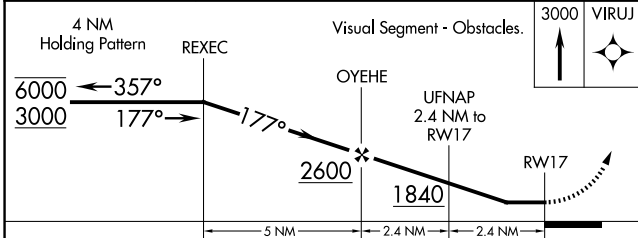
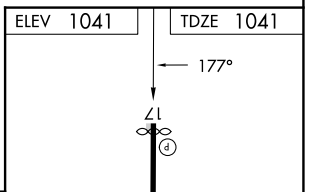
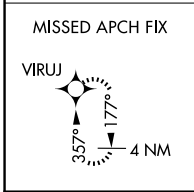
RNP APCH.	<p>Procedure NA at night. Rwy 17 helicopter visibility reduction below 1 SM NA. Use Shawnee altimeter setting. When not received, use Seminole altimeter setting.</p>	<p>MISSED APPROACH: Climb to 3000 direct VIRUJ and hold.</p>
-----------	--	--

<p>FORT WORTH CENTER 132.2 338.35</p>	<p>CTAF 122.9 0</p>
---	---------------------------------



SC-1, 14 MAY 2026 to 11 JUN 2026

SC-1, 14 MAY 2026 to 11 JUN 2026



CATEGORY	A	B	C	D
LNAV MDA	1400-1 359 (400-1)			NA
CIRCLING	1480-1 439 (500-1)	1500-1 459 (500-1)	1720-2 679 (700-2)	NA

