

WAAS CH 49138 W09A	APP CRS 089°	Rwy Ldg TDZE Apt Elev	4043 1243 1243
--	------------------------	-----------------------------	---

RNAV (GPS) RWY 9

CUMBERLAND MUNI (UBE)

RNP APCH - GPS

▼ Baro-VNAV NA when using Rice Lake altimeter setting. For uncompensated Baro-VNAV systems, LNAV/VNAV NA below -17°C or above 54°C. Rwy 9 helicopter visibility reduction below ¼ SM NA. VDP NA when using Rice Lake altimeter setting. When local altimeter setting not received, use Rice Lake altimeter setting; increase LPV DA to 1536 feet and LNAV/VNAV DA to 1562 feet and all MDA 60 feet; increase LNAV/VNAV all Cats visibility 1/8 mile and increase LNAV Cat C/D visibility and Circling Cat C/D visibility 1/4 mile. Circling Rwy 18, 36 NA at night.

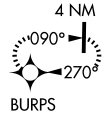
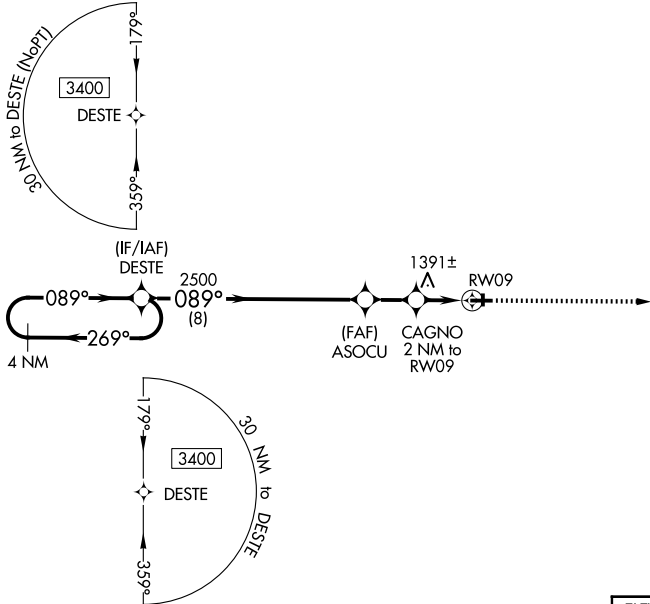
MISSED APPROACH:
Climb to 3400 direct BURPS and hold.

AWOS-3PT
119.175

MINNEAPOLIS CENTER
125.3 335.6

GCO
121.725

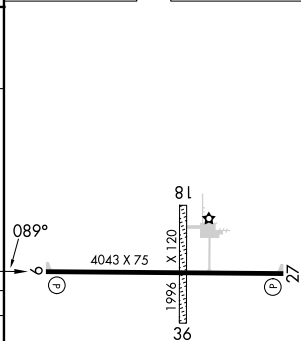
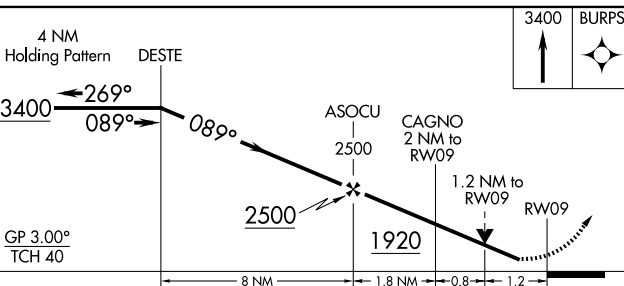
UNICOM
122.8 (CTAF) 0



EC-3, 14 MAY 2026 to 11 JUN 2026

EC-3, 14 MAY 2026 to 11 JUN 2026

ELEV	1243	TDZE	1243
------	------	------	------



CATEGORY	A	B	1.9 NM C	D
LPV DA	1493-1		250 (300-1)	
LNAV/VNAV DA	1519-1		276 (300-1)	
LNAV MDA	1660-1	417 (500-1)	1660-1 1/8	417 (500-1 1/8)
CIRCLING	1660-1 417 (500-1)	1940-1 697 (700-1)	1940-2 697 (700-2)	1980-2 1/4 737 (800-2 1/4)

REIL Rwys 9 and 27	0
MIRL Rwy 9-27	0