

WAAS CH 86718 W17A	APP CRS 174°	Rwy Idg 5001 TDZE 971 Apt Elev 971
--	------------------------	---

RNAV (GPS) RWY 17

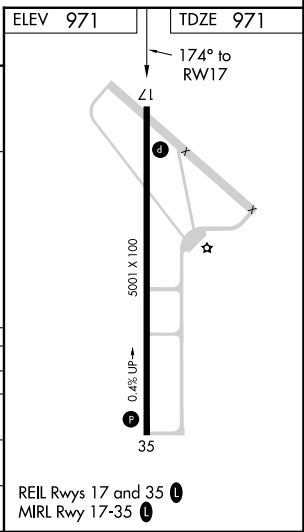
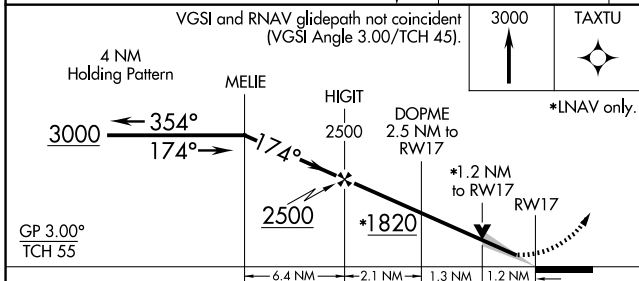
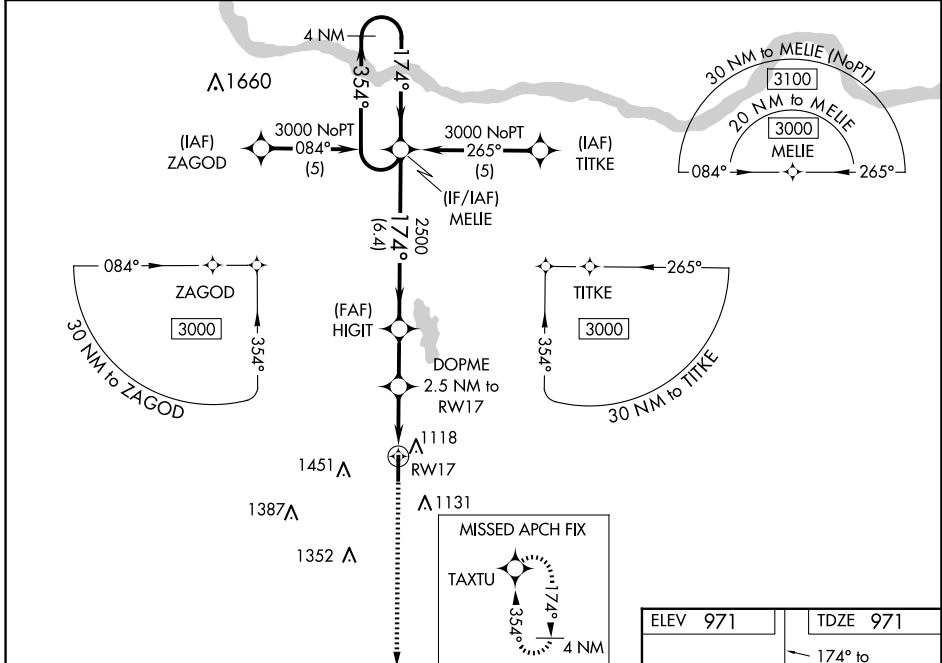
PAULS VALLEY MUNI (PVJ)

RNP APCH.

When local altimeter setting not received, use Ardmore Downtown Exec altimeter setting and increase all DA 97 feet and all MDA 100 feet and LNAV/VNAV visibility ¼ SM all Cats, LNAV Cat C, D visibility ¼ SM and Circling Cat C visibility ¼ SM, and Cat D visibility ½ SM. Baro-VNAV and VDP NA when using Ardmore Downtown Exec altimeter setting. For uncompensated Baro-VNAV systems, LNAV/VNAV NA below -16°C or above 46°C.

MISSED APPROACH:
Climb to 3000 direct TAXTU and hold.

AWOS-3 118.675	FORT WORTH CENTER 124.75 323.0	UNICOM 122.8 (CTAF) 0
--------------------------	--	---------------------------------



CATEGORY	A	B	C	D
LPV DA		1171-1	200 (200-1)	
LNAV/VNAV DA		1413-1½	442 (500-1½)	
LNAV MDA	1420-1	449 (500-1)	1420-1¼ 449 (500-1¼)	1420-1¾ 449 (500-1¾)
CIRCLING	1440-1	469 (500-1)	1540-1½ 569 (600-1½)	1760-2 789 (800-2)

SC-1, 14 MAY 2026 to 11 JUN 2026

SC-1, 14 MAY 2026 to 11 JUN 2026

REIL Rwy 17 and 35 0
MIRL Rwy 17-35 0