

WAAS CH 78325 W02A	APP CRS 018°	Rwy Ldg TDZE Apf Elev	6001 484 501
--	------------------------	-----------------------------	---

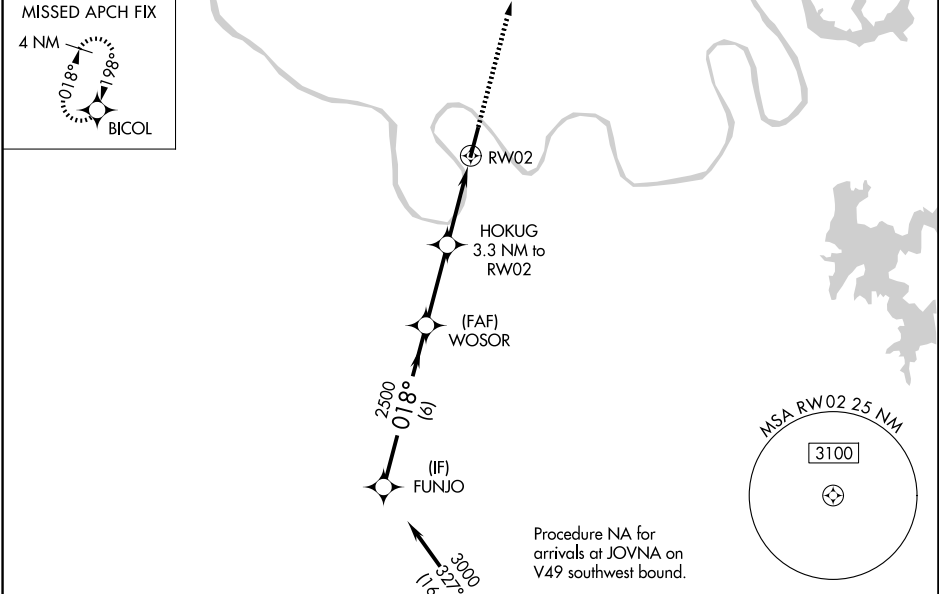
RNAV (GPS) RWY 2

JOHN C TUNE (JWN)

▽ For uncompensated Baro-VNAV systems, LNAV/VNAV NA below -15°C (5°F) or above 54°C (130°F). Circling NA E of Rwy 2-20. Baro-VNAV and VDP NA when using Nashville Intl altimeter setting. DME/DME RNP-0.3 NA. When local altimeter setting not received, use Nashville Intl altimeter setting and increase all DAs 39 feet and all MDAs 40 feet; increase LPV visibility all Cats ½ SM, LNAV visibility Cat B ¼ SM.

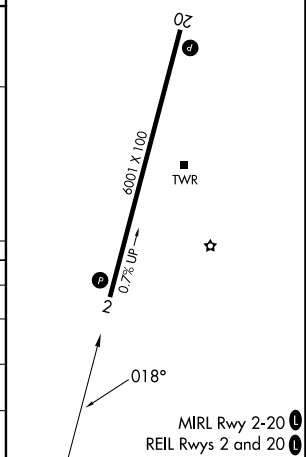
MISSED APPROACH:
Climb to 3000 direct BICOL and hold.

ATIS 127.075	NASHVILLE APP CON 119.35 372.0	JOHN TUNE TOWER ★ 119.45 (CTAF)	GND CON 121.7	UNICOM 122.7
------------------------	--	---	-------------------------	------------------------



ELEV 501	D	TDZE 484
----------	----------	----------

GP 3.00° TCH 40	FUNJO		WOSOR		HOKUG 3.3 NM to RW02		RW02	
	3000		2500		2500		*1540	
6 NM		3 NM		1.2 NM		2.1 NM		
CATEGORY	A	B	C	D				
LPV DA	734-7/8		250 (300-7/8)					
LNAV/VNAV DA	1079-2 1/2		595 (600-2 1/2)					
LNAV MDA	1160-1	676 (700-1)	1160-2	676 (700-2)				
CIRCLING	1200-1	699 (700-1)	1340-2 3/4	839 (900-2 3/4)				



SE-1, 14 MAY 2026 to 11 JUN 2026

SE-1, 14 MAY 2026 to 11 JUN 2026