

WAAS CH <b>53730</b> <b>W17A</b>	APP CRS <b>172°</b>	Rwy Idg TDZE Apt Elev	<b>3909</b> <b>1738</b> <b>1739</b>
--	------------------------	-----------------------------	---

# RNAV (GPS) RWY 17

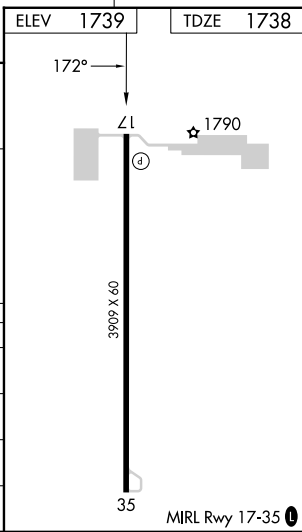
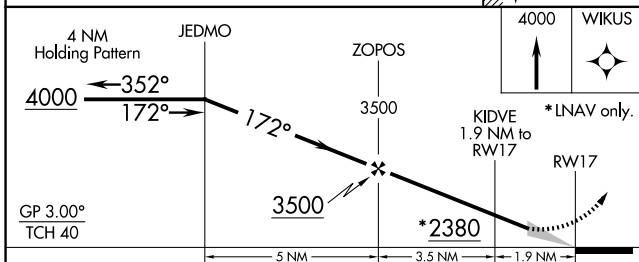
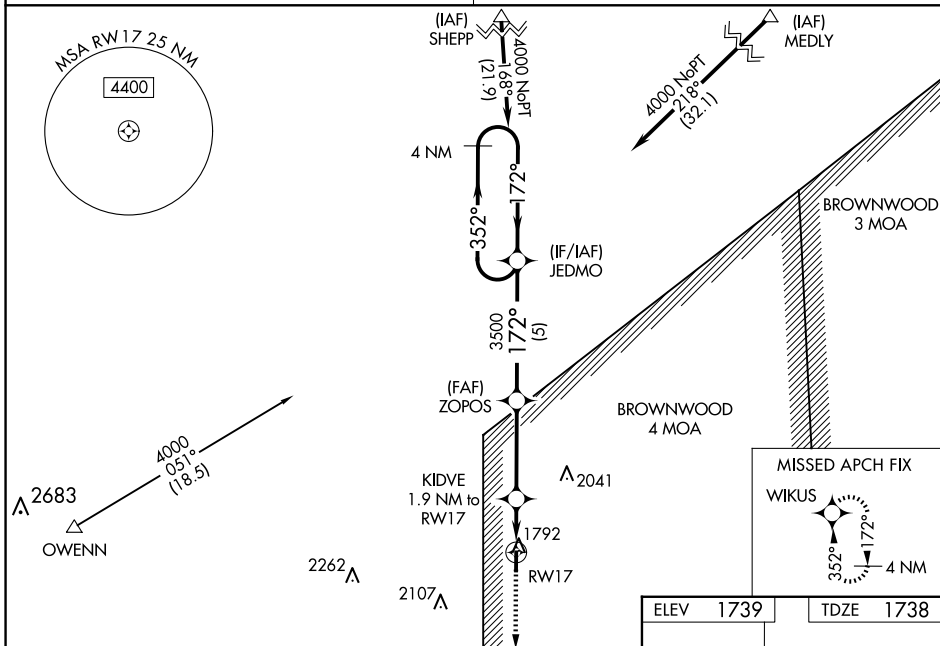
BRUCE FLD (E30)

**Baro-VNAV NA.**  
**DME/DME RNP-0.3 NA.**  
**NA**  
 Use San Angelo altimeter setting, when not received use Brady altimeter setting and increase all DA 15 feet and all MDA 20 feet, and increase LPV and LNAV/VNAV all Cats visibility 1/8 mile.

**MISSED APPROACH:**  
 Climb to 4000 direct  
 WIKUS and hold.

SAN ANGELO APP CON ★  
**125.35 354.1**

CTAF  
**122.9 0**



CATEGORY	A	B	C	D
LPV DA	2089-1 1/8	351 (400-1 1/8)		NA
LNAV/VNAV DA	2089-1 1/8	351 (400-1 1/8)		NA
LNAV MDA	2160-1	422 (500-1)		NA
CIRCLING	2220-1	481 (500-1)		NA

SC-3, 14 MAY 2026 to 11 JUN 2026

SC-3, 14 MAY 2026 to 11 JUN 2026