

NDB/DME UKS <b>393</b>	APP CRS <b>084°</b>	Rwy Idg TDZE Apt Elev	<b>N/A</b> <b>N/A</b> <b>12</b>
Chan <b>100 (115.3)</b>			

# NDB-A

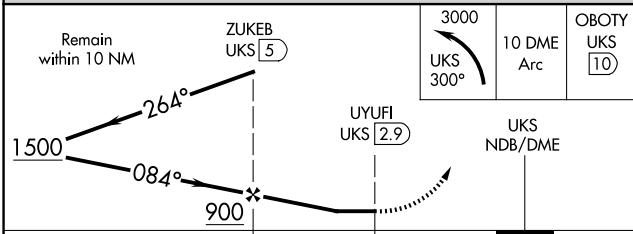
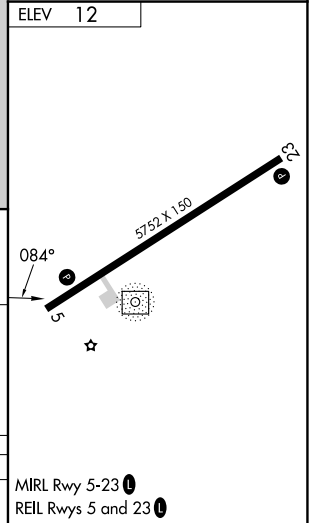
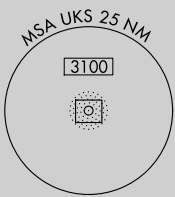
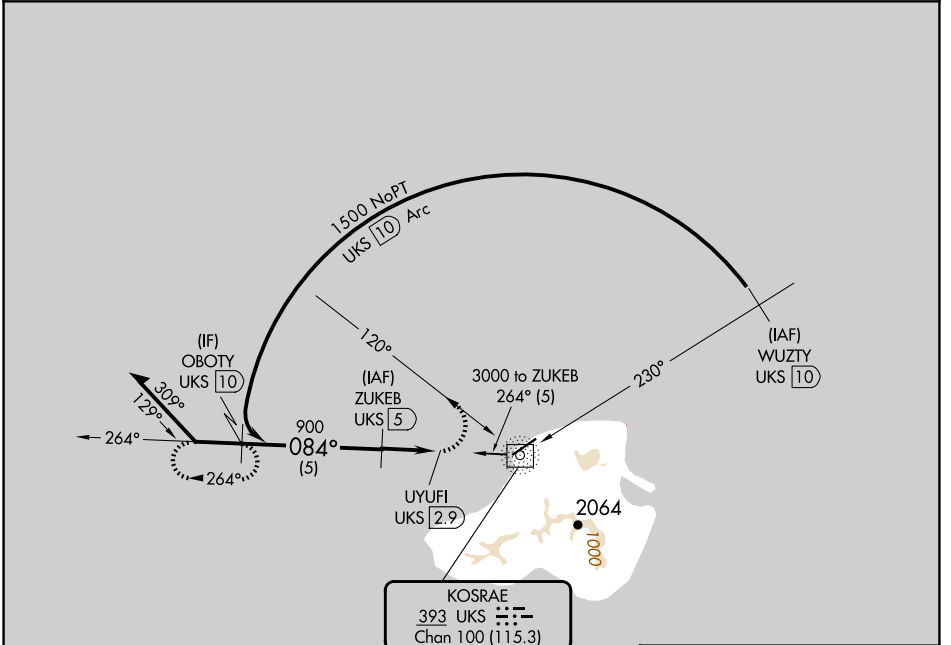
KOSRAE (TTK)(PTSA)

DME required.

**▽** Circling NA southeast of Rwy 5-23. Obtain local altimeter setting on CTAF; when not received, procedure NA.  
**▲ NA** No controlled airspace below 5500 feet.

MISSED APPROACH: Climbing left turn to 3000 on UKS NDB/DME 300° bearing and 10 DME Arc to OBOTY/10 DME.

KOSRAE RADIO  
**123.6 (CTAF)** **0**



CATEGORY	A	B	C	D
CIRCLING	520-3	508 (600-3)		580-3 568 (600-3)