

WAAS CH 49108 W35A	APP CRS 353°	Rwy Ldg TDZE Apt Elev	4605 1823 1827
--	------------------------	-----------------------------	---

RNAV (GPS) RWY 35

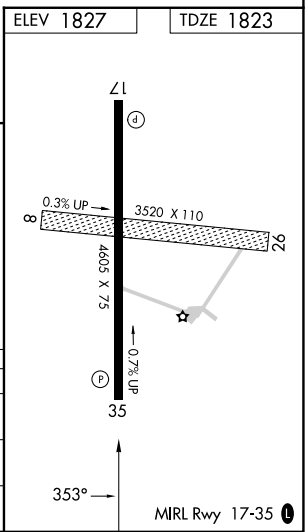
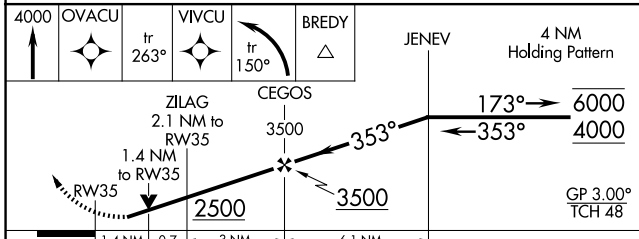
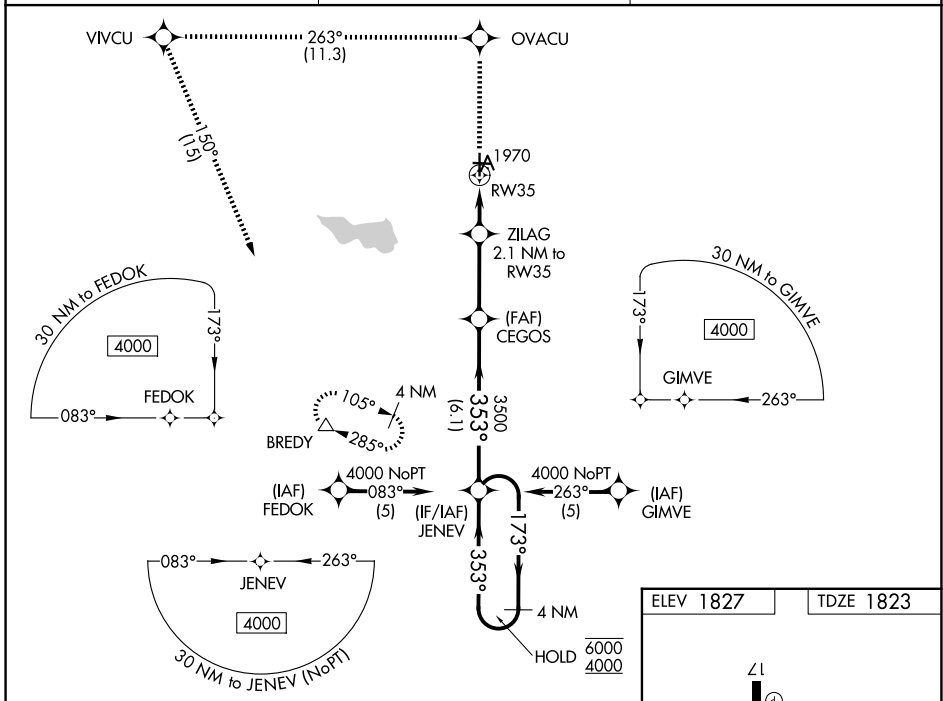
CURTIS FLD (BBD)

RNP APCH - GPS.

▽ For uncompensated Baro-VNAV systems, LNAV/VNAV NA below -18°C or above 54°C.
▲ Baro-VNAV and VDP NA when using JCT altimeter setting. Rwy 35 helicopter visibility reduction below 3/4 SM NA. When local altimeter setting not received, use JCT altimeter setting and increase LPV DA to 2190 feet; increase LNAV/VNAV DA to 2287 feet and all visibilities 3/8 SM. Increase all MDAs 120 feet and LNAV visibility Cat C 1/4 SM.

MISSED APPROACH: Climb to 4000 direct OVACU and on track 263° to VIVCU and left turn on track 150° to BREDY and hold.

AWOS-3 118.375	HOUSTON CENTER 132.35 317.5	UNICOM 122.8 (CTAF)
--------------------------	---------------------------------------	-------------------------------



CATEGORY	A	B	C	D
LPV DA	2073-1	250 (300-1)		NA
LNAV/VNAV DA	2170-1	347 (400-1)		NA
LNAV MDA	2280-1	457 (500-1)	2280-1 3/8 457 (500-1 3/8)	NA

SC-3, 14 MAY 2026 to 11 JUN 2026

SC-3, 14 MAY 2026 to 11 JUN 2026