

|             |          |             |
|-------------|----------|-------------|
| APP CRS     | Rwy Idg  | <b>5000</b> |
| <b>309°</b> | TDZE     | <b>1008</b> |
|             | Apt Elev | <b>1008</b> |

# RNAV (GPS) RWY 31

GRINNELL RGNL (GGI)

RNP APCH - GPS.

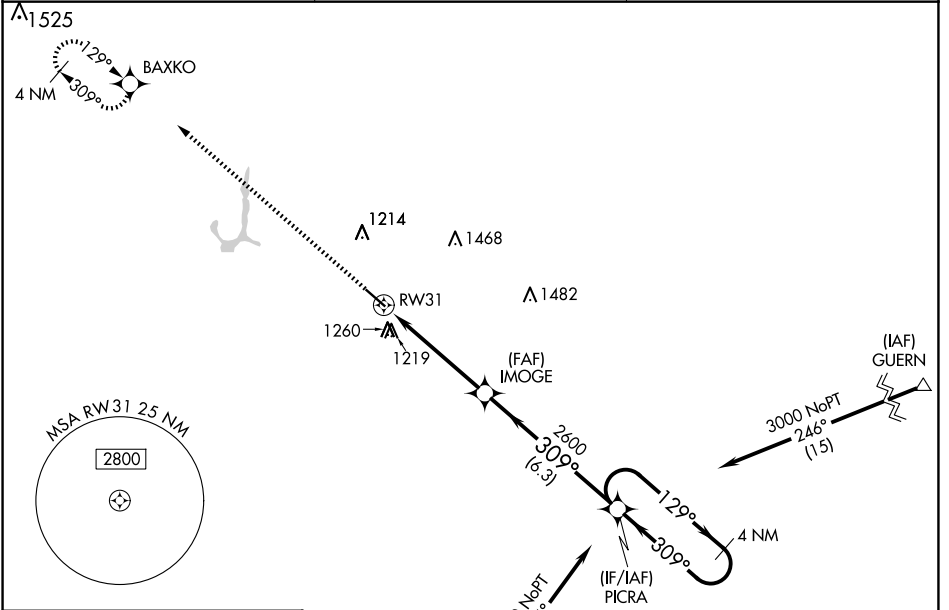
**⚠** When local altimeter setting not received, use Newton altimeter setting and increase all MDA 40 feet and LNAV visibility Cat C 1/8 SM. Rwy 31 helicopter visibility reduction below 3/4 SM NA. VDP NA when using Newton altimeter setting.

MISSED APPROACH: Climb to 3000 direct BAXKO and hold.

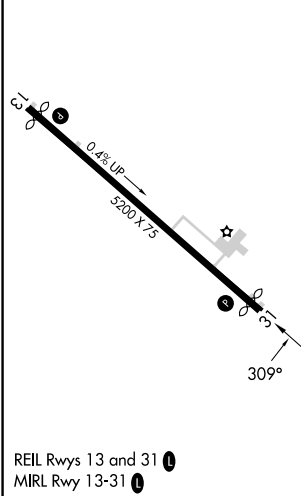
AWOS-3  
**120.725**

CHICAGO CENTER  
**127.05 282.35**

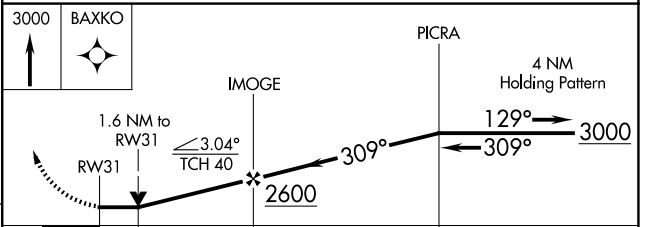
UNICOM  
**122.8 (CTAF)**



ELEV 1008      TDZE 1008



REIL Rws 13 and 31  
MIRL Rwy 13-31



| CATEGORY | A      | B           | C                             | D  |
|----------|--------|-------------|-------------------------------|----|
| LNAV MDA | 1560-1 | 552 (600-1) | 1560-1 5/8<br>552 (600-1 5/8) | NA |
| CIRCLING | 1620-1 | 612 (700-1) | 1620-1 3/4<br>612 (700-1 3/4) | NA |

NC-3, 14 MAY 2026 to 11 JUN 2026

NC-3, 14 MAY 2026 to 11 JUN 2026