

BARMY SIX DEPARTURE (RNAV)

SE-2, 14 MAY 2026 to 11 JUN 2026

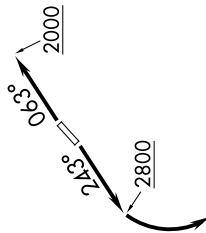
TOP ALTITUDE:
3000

RNAV 1 - DME/DME/IRU or GPS.
RADAR required.

CHARLOTTE DEP CON
134.75 257.2
AWOS-3
119.675
CLNC DEL (GCO)
124.9



NOTE: Turbojet only.
NOTE: If unable to accept climb rates, advise ATC on initial contact.
NOTE: Transponder code will be issued via PDC or Charlotte CLNC DEL.
NOTE: Upon reaching 10000 MSL, accelerate to and maintain 280K, if unable advise ATC.



RALEIGH/DURHAM
RDU

TAR RIVER
TYI

NUTIZE

OLUBE

BATTA

BATTA

BATTA

N

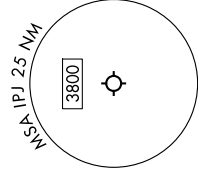
MESHY

GULFY

BARMY

EBOOK

TAKEOFF MINIMUMS
Rwys 5, 23: Standard.



NOTE: Chart not to scale.

DEPARTURE ROUTE DESCRIPTION

TAKEOFF RUNWAY 5: Climb on heading 063° to 2000 before proceeding on course, then on heading assigned by ATC, thence...
TAKEOFF RUNWAY 23: Climb on heading 243° to 2800 before turning left, then on heading assigned by ATC, thence...

...on RADAR vectors to MESHY, then on depicted route to BARMY. Then on assigned transition. Maintain 3000, expect filed altitude 10 minutes after departure.

- NUTIZE TRANSITION (BARMY6.NUTIZE)
- RALEIGH/DURHAM TRANSITION (BARMY6.RDU)
- TAR RIVER TRANSITION (BARMY6.TYI)

BARMY SIX DEPARTURE (RNAV)

SE-2, 14 MAY 2026 to 11 JUN 2026