

BOBZY SIX DEPARTURE (RNAV)

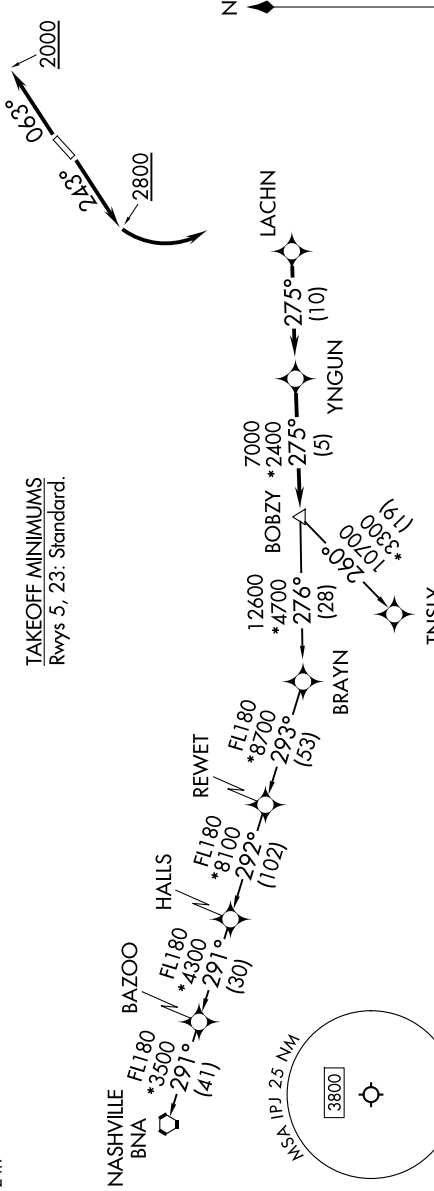
SE-2, 14 MAY 2026 to 11 JUN 2026

TOP ALTITUDE:
3000

RNAV 1 - DME/DME/IRU or GPS.
RADAR required.

CHARLOTTE DEP CON
134.75 257.2
AWOS-3
119.675
CLINC DEL (GCO)
124.9

TAKEOFF MINIMUMS
Rwys 5, 23: Standard.



DEPARTURE ROUTE DESCRIPTION

TAKEOFF RUNWAY 5: Climb on heading 063° to 2000 before proceeding on course, then on heading assigned by ATC, thence...
TAKEOFF RUNWAY 23: Climb on heading 243° to 2800 before turning left, then on heading assigned by ATC, thence...

...on RADAR vectors to LACHN, then on depicted route to BOBZY, then on assigned transition. Maintain 3000, expect filed altitude 10 minutes after departure.

NASHVILLE TRANSITION (BOBZY6.BNA)
TNSLY TRANSITION (BOBZY6.TNSLY)

- NOTE: Turbojet only.
- NOTE: If unable to accept climb rates, advise ATC on initial contact.
- NOTE: Transponder code will be issued via PDC or Charlotte CLINC DEL.
- NOTE: Upon reaching 10000 MSL, accelerate to and maintain 280K, if unable advise ATC.

NOTE: Chart not to scale.

SE-2, 14 MAY 2026 to 11 JUN 2026