

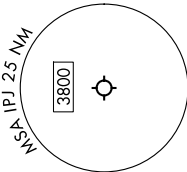
# JOJO SIX DEPARTURE (RNAV)

SE-2, 14 MAY 2026 to 11 JUN 2026

**TOP ALTITUDE:**  
3000

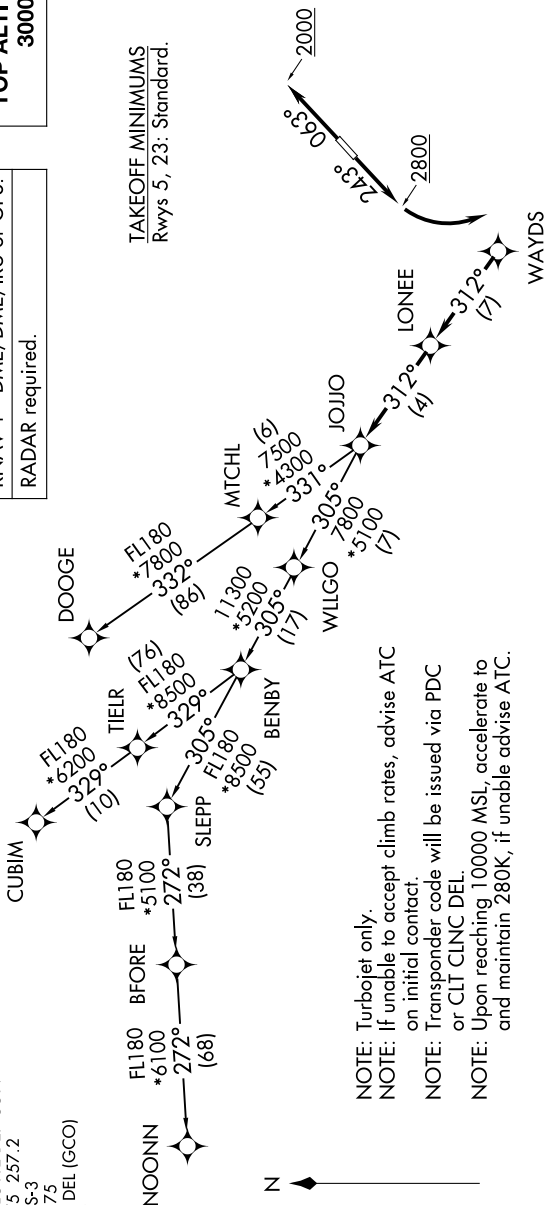
RNAV 1 - DME/DME/IRU or GPS.  
RADAR required.

TAKEOFF MINIMUMS  
Rwys 5, 23: Standard.



NOTE: Chart not to scale.

CHARLOTTE DEP CON  
134.75 257.2  
AWOS-3  
119.675  
CLNC DEL (GCO)  
124.9



- NOTE: Turbojet only.
- NOTE: If unable to accept climb rates, advise ATC on initial contact.
- NOTE: Transponder code will be issued via PDC or CLT CLNC DEL.
- NOTE: Upon reaching 10000 MSL, accelerate to and maintain 280K, if unable advise ATC.

## DEPARTURE ROUTE DESCRIPTION

TAKEOFF RUNWAY 5: Climb on heading 063° to 2000 before proceeding on course, then on heading assigned by ATC, thence. . .  
 TAKEOFF RUNWAY 23: Climb on heading 243° to 2800 before turning left, then on heading assigned by ATC, thence. . .  
 . . . for RADAR vectors to WAYDS, then on depicted route to JOJJO. Then on assigned transition. Maintain 3000, expect filed altitude 10 minutes after departure.

- CUBIM TRANSITION (JOJO6.CUBIM)
- DOOGE TRANSITION (JOJO6.DOOGE)
- NOONN TRANSITION (JOJO6.NOONN)

# JOJO SIX DEPARTURE (RNAV)

SE-2, 14 MAY 2026 to 11 JUN 2026