

(KRITR7.KRITR) 26134

AL-6894 (FAA)

LINCOLN COUNTY RGNL (IPJ)
LINCOLN, NORTH CAROLINA

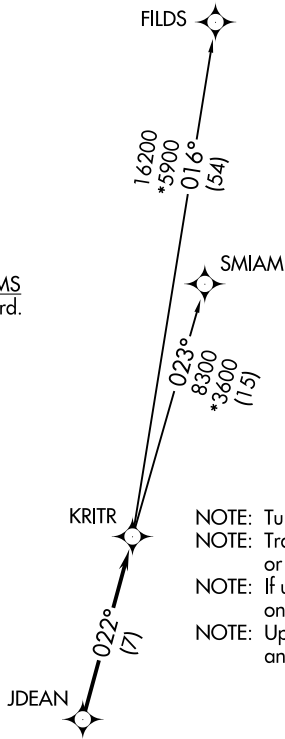
KRITR SEVEN DEPARTURE (RNAV)

CHARLOTTE DEP CON
134.75 257.2
AWOS-3
119.675
CLNC DEL (GCO)
124.9

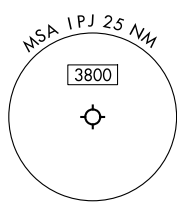
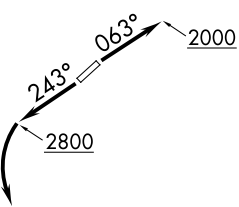
**TOP ALTITUDE:
3000**

RNAV 1 - DME/DME/IRU or GPS.
RADAR required.

TAKEOFF MINIMUMS
Rwys 5, 23: Standard.



- NOTE: Turbojet only.
- NOTE: Transponder code will be issued via PDC or CLT CLNC DEL.
- NOTE: If unable to accept climb rates, advise ATC on initial contact.
- NOTE: Upon reaching 10000 MSL, accelerate to and maintain 280K, if unable advise ATC.



NOTE: Chart not to scale.

DEPARTURE ROUTE DESCRIPTION

TAKEOFF RUNWAY 5: Climb on heading 063° to 2000 before proceeding on course, then on heading assigned by ATC, thence. . .

TAKEOFF RUNWAY 23: Climb on heading 243° to 2800 before turning left, then on heading assigned by ATC, thence. . .

. . .for RADAR vectors to JDEAN, then on track 022° to KRITR, then on assigned transition. Maintain 3000. Expect filed altitude 10 minutes after departure.

FILDS TRANSITION (KRITR7.FILDS)
SMIAM TRANSITION (KRITR7.SMIAM)

KRITR SEVEN DEPARTURE (RNAV)

(KRITR7.KRITR) 14MAY26

LINCOLN, NORTH CAROLINA
LINCOLN COUNTY RGNL (IPJ)

SE-2, 14 MAY 2026 to 11 JUN 2026

SE-2, 14 MAY 2026 to 11 JUN 2026