

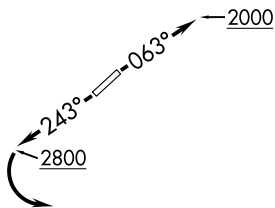
(KWEEN6.KWEEN) 26134

AL-6894 (FAA)

LINCOLN COUNTY RGNL (IPJ)
LINCOLNTON, NORTH CAROLINA

KWEEN SIX DEPARTURE (RNAV)

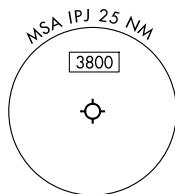
CHARLOTTE DEP CON
134.75 257.2
AWOS-3
119.675
CLNC DEL (GCO)
124.9



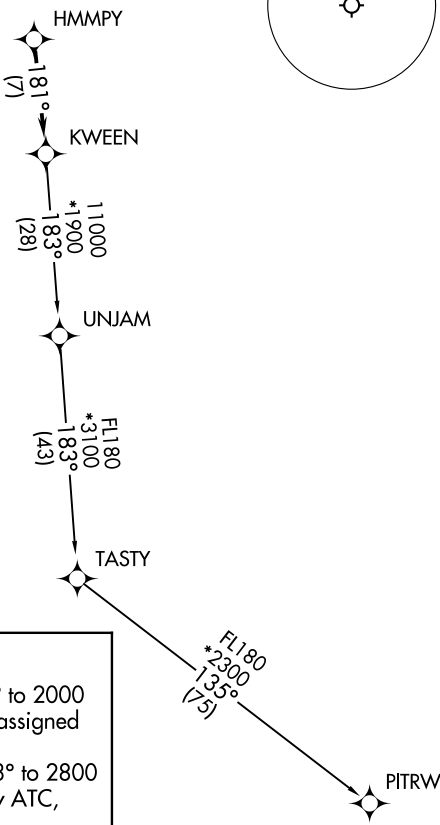
**TOP ALTITUDE:
3000**

RNAV 1 - DME/DME/IRU or GPS.

RADAR required.



TAKEOFF MINIMUMS
Rwys 5, 23: Standard.



- NOTE: Turbojet only.
- NOTE: Transponder code will be issued via PDC or CLT CLNC DEL.
- NOTE: If unable to accept climb rates, advise ATC on initial contact.
- NOTE: Upon reaching 10000 MSL, accelerate to and maintain 280K, if unable advise ATC.

DEPARTURE ROUTE DESCRIPTION

TAKEOFF RUNWAY 5: Climb on heading 063° to 2000 before proceeding on course, then on heading assigned by ATC, thence. . .

TAKEOFF RUNWAY 23: Climb on heading 243° to 2800 before turning left, then on heading assigned by ATC, thence. . .

. . . for RADAR vectors to HMMPY, then on track 181° to KWEEN. Then on assigned transition. Maintain 3000, expect filed altitude 10 minutes after departure.

PITRW TRANSITION (KWEEN6.PITRW)
UNJAM TRANSITION (KWEEN6.UNJAM)

NOTE: Chart not to scale.

SE-2, 14 MAY 2026 to 11 JUN 2026

SE-2, 14 MAY 2026 to 11 JUN 2026

KWEEN SIX DEPARTURE (RNAV)
(KWEEN6.KWEEN) 14MAY26

LINCOLN COUNTY RGNL (IPJ)
LINCOLNTON, NORTH CAROLINA