

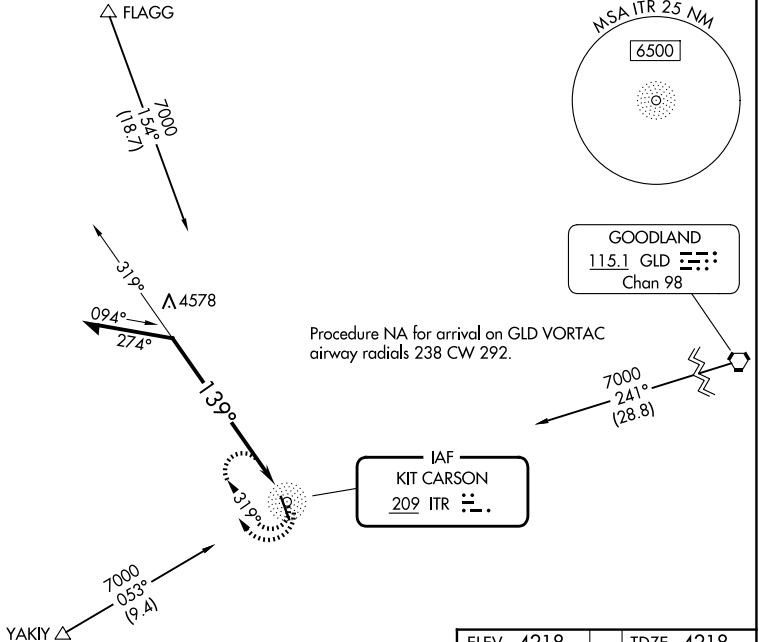
NDB ITR 209	APP CRS 139°	Rwy Ldg TDZE 5199 4218	Apt Elev 4218
-----------------------	------------------------	--	-------------------------

NDB RWY 15

KIT CARSON COUNTY (ITR)

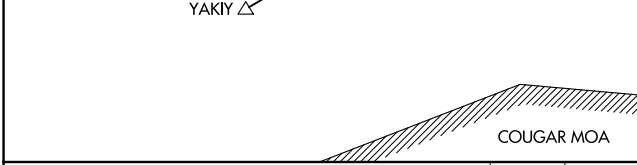
MISSED APPROACH: Climbing right turn to 7000 in ITR NDB holding pattern, continue climb-in-hold to 7000.

ASOS 135.225	DENVER CENTER 132.7 226.675	UNICOM 122.8 (CTAF)
------------------------	---------------------------------------	-------------------------------

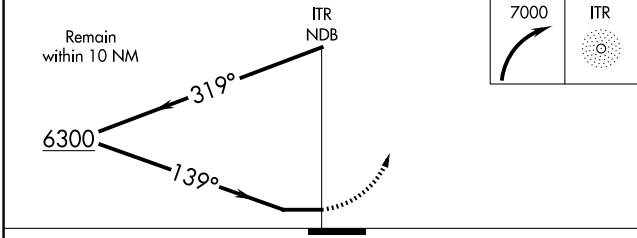
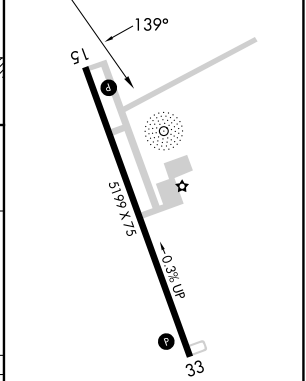


SW-1, 14 MAY 2026 to 11 JUN 2026

SW-1, 14 MAY 2026 to 11 JUN 2026



ELEV 4218	TDZE 4218
-----------	-----------



CATEGORY	A	B	C	D
S-15	4940-1	722 (800-1)	4940-2	722 (800-2)
CIRCLING	4940-1	722 (800-1)	4940-2	4940-2 1/4 722 (800-2 1/4)

MIRL Rwy 15-33
REIL Rwys 15 and 33