

APP CRS 118°	Rwy Ldg TDZE Apt Elev	4410 1703 1715
------------------------	-----------------------------	---

RNAV (GPS) RWY 12

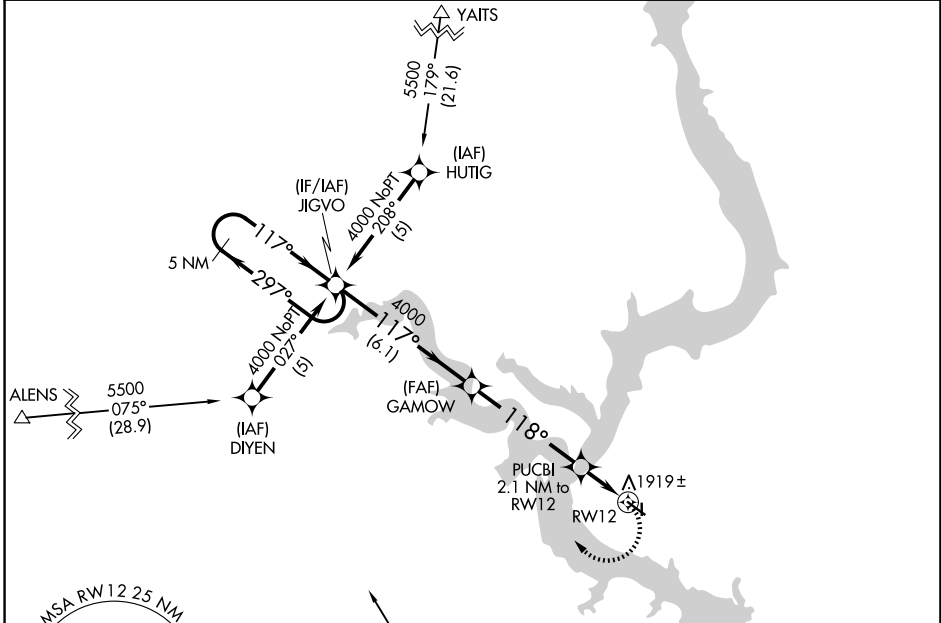
MOBRIDGE MUNI (MBG)

RNP APCH-GPS.

▼ Rwy 12 helicopter visibility reduction below 1 SM NA. If local altimeter setting not received, use Pierre Rgnl altimeter setting and increase all MDAs 180 feet. Circling NA for Cat C and D northeast of Rwy 12-30. Procedure NA at night. Circling NA to Rwys 17 and 35.

MISSED APPROACH:
Climbing right turn to 4000
direct JIGVO and hold.

ASOS 121.425	MINNEAPOLIS CENTER 135.25 256.7	GCO 121.725	UNICOM 122.8 (CTAF) 0
------------------------	---	-----------------------	---------------------------------



NC-1, 14 MAY 2026 to 11 JUN 2026

NC-1, 14 MAY 2026 to 11 JUN 2026

	ELEV 1715	TDZE 1703		
5 NM Holding Pattern	JIGVO	GAMOW	4000	JIGVO
4000 ← 297°	← 117°	→ 117° → 4000	3.06° TCH 40	PUCBI 2.1 NM to RW12
		→ 118°	2400	RW12
		← 118°	5000 (24.5)	ILECU
		← 118°	4410 X 75	Z1
		← 118°	1.0% UP	2387 X 230
		← 118°	35	30
		← 118°	MIRL Rwy 12-30 0	
VGSi and descent angles not coincident (VGSi Angle 3.00/TCH 30).	6.1 NM	4.9 NM	2.1 NM	
CATEGORY	A	B	C	D
LNAV MDA	2260-1	557 (600-1)	2260-1½ 557 (600-1½)	2260-1¾ 557 (600-1¾)
CIRCLING	2360-1	645 (700-1)	2360-1¾ 645 (700-1¾)	2560-2¾ 845 (900-2¾)