

WAAS CH 72622 W30A	APP CRS 298°	Rwy Ldg 4410 TDZE 1701 Apt Elev 1716
--	------------------------	---

RNAV (GPS) RWY 30

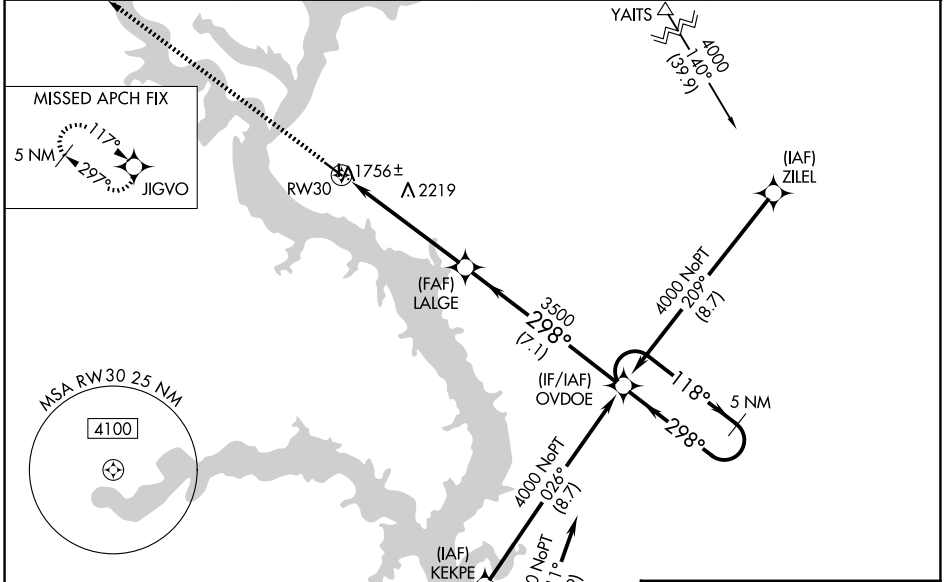
MOBRIDGE MUNI (MBG)

RNP APCH-GPS.

▼ Baro-VNAV NA when using Pierre Rgnl altimeter setting. For uncompensated Baro-VNAV systems, LNAV/VNAV NA below -18°C or above 33°C. Rwy 30 helicopter visibility below 3/4 SM NA. VDP NA with Pierre Rgnl altimeter setting. When local altimeter setting not received, use Pierre Rgnl altimeter setting and increase all DA 165 feet and all MDA 180 feet, increase LPV and LNAV/VNAV all Cats visibility 3/4 mile, LNAV Cat B visibility 1/2 mile, Cat C/D 1/2 mile, Circling Cat A/B/D 1/4 mile, Cat C 1/2 mile. Circling NA for Cat C and D northeast of Rwy 12-30. Circling Rwy 12 NA at night. Circling NA to Rwys 17 and 35.

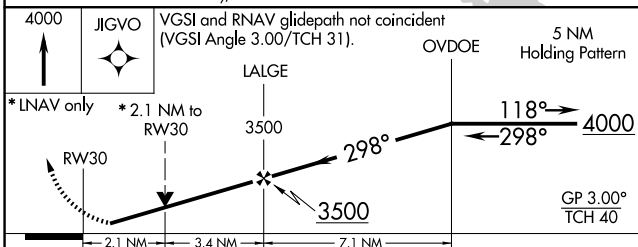
MISSED APPROACH: Climb to 4000 direct JIGVO and hold.

ASOS 121.425	MINNEAPOLIS CENTER 135.25 256.7	GCO 121.725	UNICOM 122.8 (CTAF) 0
------------------------	---	-----------------------	---------------------------------

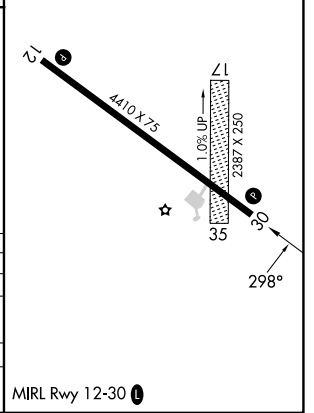


Procedure NA for arrival at CALOG via V344 westbound.

Procedure NA for arrival at CALOG via V344 westbound.



ELEV 1716	TDZE 1701
-----------	-----------



CATEGORY	A	B	C	D
LPV DA		2050-1 1/8	349 (400-1 1/8)	
LNAV/VNAV DA		1993-1	292 (300-1)	
LNAV MDA	2400-1	699 (700-1)	2400-2	699 (700-2)
CIRCLING	2400-1	684 (700-1)	2400-2	2560-2 3/4 844 (900-2 3/4)

NC-1, 14 MAY 2026 to 11 JUN 2026

NC-1, 14 MAY 2026 to 11 JUN 2026