

# RNAV (GPS) RWY 35

ANVIK (ANV)(PANV)

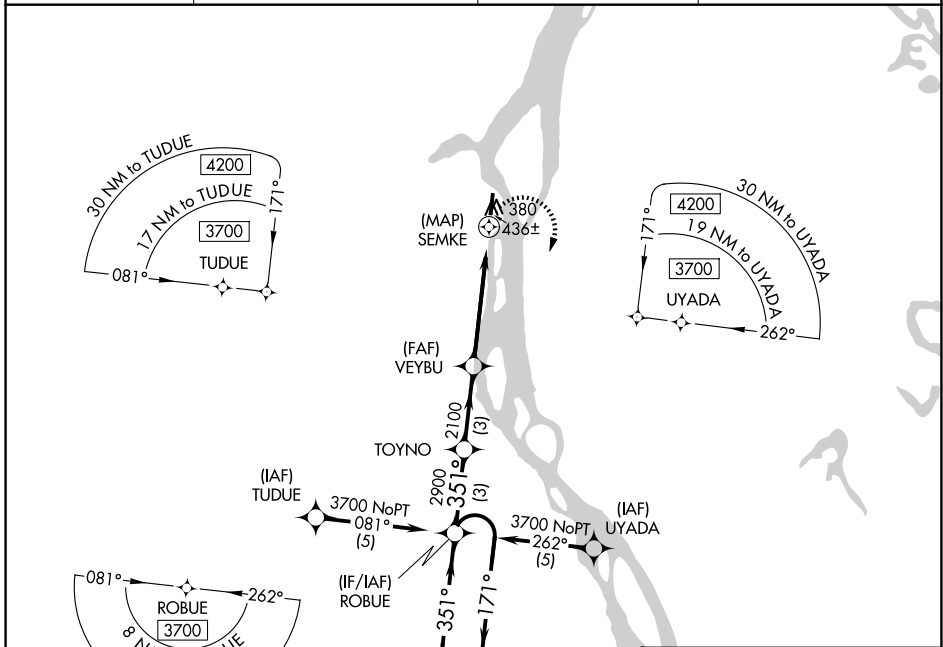
APP CRS <b>351°</b>	Rwy Idg <b>4000</b>
	TDZE <b>297</b>
	Apt Elev <b>297</b>

RNP APCH - GPS.

**▽**  
**▲**

MISSED APPROACH: Climbing right turn to 3700 direct ROBUE and hold, continue climb-in-hold to 3700.

AWOS-3P <b>133.55</b>	ANCHORAGE CENTER <b>135.7 335.5</b>	KENAI RADIO <b>122.4</b>	UNICOM <b>122.7 (CTAF) 0</b>
--------------------------	--	-----------------------------	---------------------------------

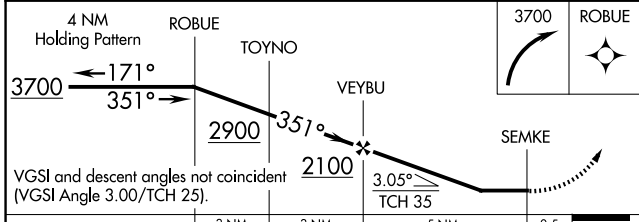
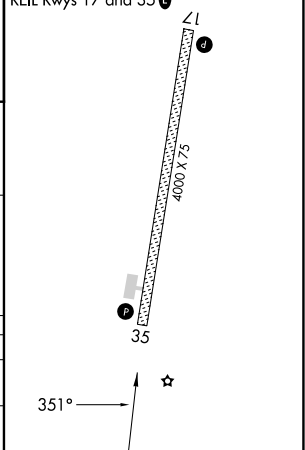


AK, 14 MAY 2026 to 09 JUL 2026

AK, 14 MAY 2026 to 09 JUL 2026

ELEV 297	TDZE 297
----------	----------

MRL Rwy 17-35 **0**  
REL Rwy 17 and 35 **0**



CATEGORY	A	B	C	D
LNVA MDA	780-1 483 (500-1)		780-1 $\frac{3}{8}$ 483 (500-1 $\frac{3}{8}$ )	
CIRCLING	840-1 543 (600-1)		840-1 $\frac{1}{2}$ 543 (600-1 $\frac{1}{2}$ )	860-2 563 (600-2)