

WAAS CH <b>93614</b> W35A	APP CRS <b>357°</b>	Rwy Ldg <b>4317</b> TDZE <b>1636</b> Apt Elev <b>1636</b>
---------------------------------	------------------------	---

# RNAV (GPS) RWY 35

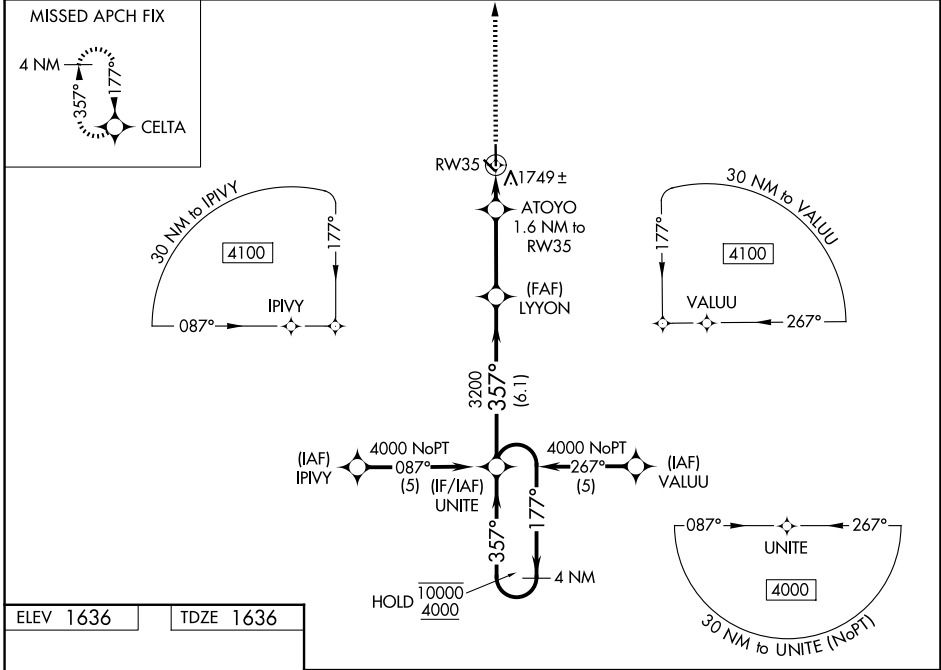
FAIRMONT STATE (F<sup>M</sup>Z)

RNP APCH - GPS.

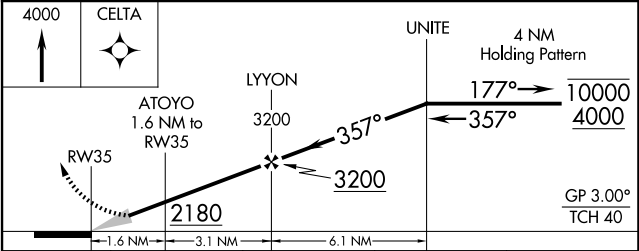
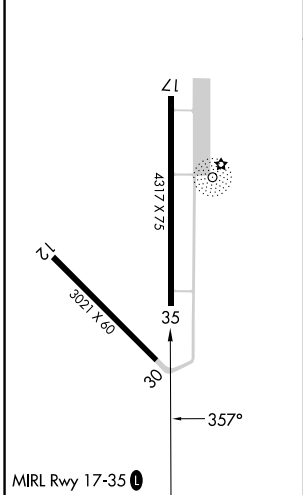
**NA** Circling to Rwy 12, 30 NA at night. Baro-VNAV NA. Use York altimeter setting; when not received, use Hebron altimeter setting and increase LPV DA to 1965 feet and all visibilities  $\frac{1}{8}$  SM; increase LNAV/VNAV DA to 2125 feet; and increase all MDAs 40 feet.

MISSED APPROACH: Climb to 4000 direct CELTA and hold.

JYR AWOS-3 <b>124.175</b>	MINNEAPOLIS CENTER <b>119.4 278.8</b>	CTAF <b>122.9</b>
------------------------------	--	----------------------



ELEV 1636	TDZE 1636
-----------	-----------



CATEGORY	A	B	C	D
LPV DA	1934-7 $\frac{7}{8}$	298 (300-7 $\frac{7}{8}$ )		NA
LNAV/VNAV DA	2094-1 $\frac{3}{8}$	458 (500-1 $\frac{3}{8}$ )		NA
LNAV MDA	2060-1	424 (500-1)		NA
CIRCLING	2120-1	484 (500-1)		NA