

| | | | |
|--|------------------------|-----------------------------|---|
| WAAS CH 48843 W09A | APP CRS 092° | Rwy Ldg TDZE Apt Elev | 4300 489 494 |
|--|------------------------|-----------------------------|---|

RNAV (GPS) RWY 9
LOUISA COUNTY/FREEMAN FLD (LKU)

RNP APCH - GPS.

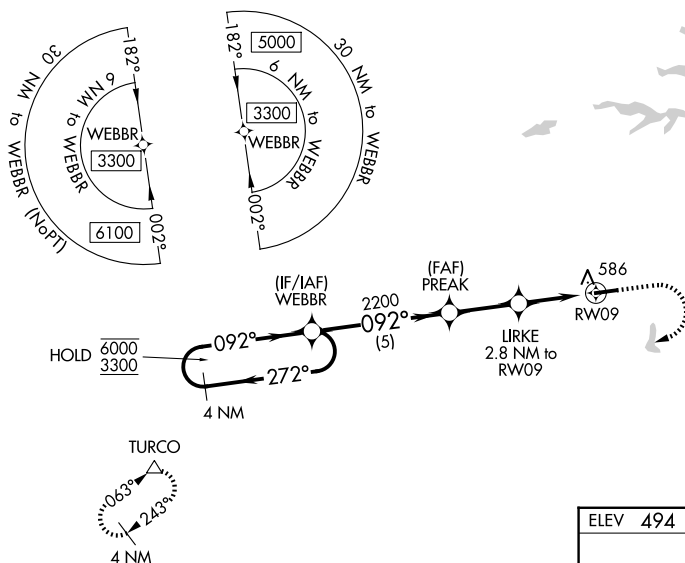
- ▼ Rwy 9 helicopter visibility reduction below 3/4 SM NA. Circling NA north of Rwy 9-27.
- ▲ For uncompensated Baro-VNAV systems, LNAV/VNAV NA below -15°C or above 54°C.
- Baro-VNAV and VDP NA when using OMH altimeter setting. When local altimeter setting not received, use OMH altimeter setting and increase LPV DA to 780 feet and all visibilities 1/8 SM, LNAV/VNAV DA to 789 feet and all visibilities 1/8 SM. Increase all MDAs 60 feet.

MISSED APPROACH: Climb to 1000 then climbing right turn to 3300 direct TURCO and hold.

AWOS-3
119,475

POTOMAC APP CON
132.85 323.125

UNICOM
122,975 (CTAF) 1



| | |
|----------|----------|
| ELEV 494 | TDZE 489 |
|----------|----------|

3D perspective view of the runway showing the 0.6% climb gradient and 4300 x 100 dimensions. The diagram also shows the 092° approach angle and the 27° angle for the missed approach turn.

| | | | | |
|--------------|----------------------|----------------------|---|----|
| CATEGORY | A | B | C | D |
| LPV DA | 739-3/4 | 250 (300-3/4) | | NA |
| LNAV/VNAV DA | 748-3/4 | 259 (300-3/4) | | NA |
| LNAV MDA | 840-1 | 351 (400-1) | | NA |
| CIRCLING | 920-1 426 (500-1) | 960-1 466 (500-1) | | NA |

REIL Rwy 9 and 27 1
MIRL Rwy 9-27 1

NE-3, 14 MAY 2026 to 11 JUN 2026

NE-3, 14 MAY 2026 to 11 JUN 2026