

WAAS CH 69438 W10A	APP CRS 096°	Rwy Ldg TDZE Apt Elev	5002 240 240
--	------------------------	-----------------------------	---

RNAV (GPS) RWY 10

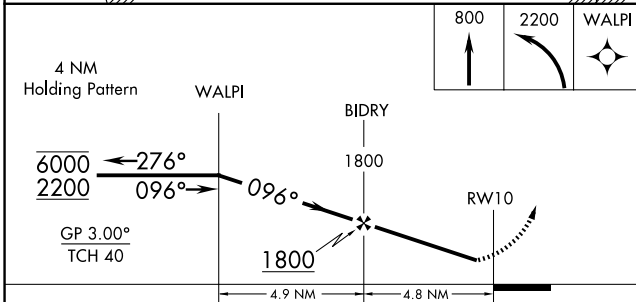
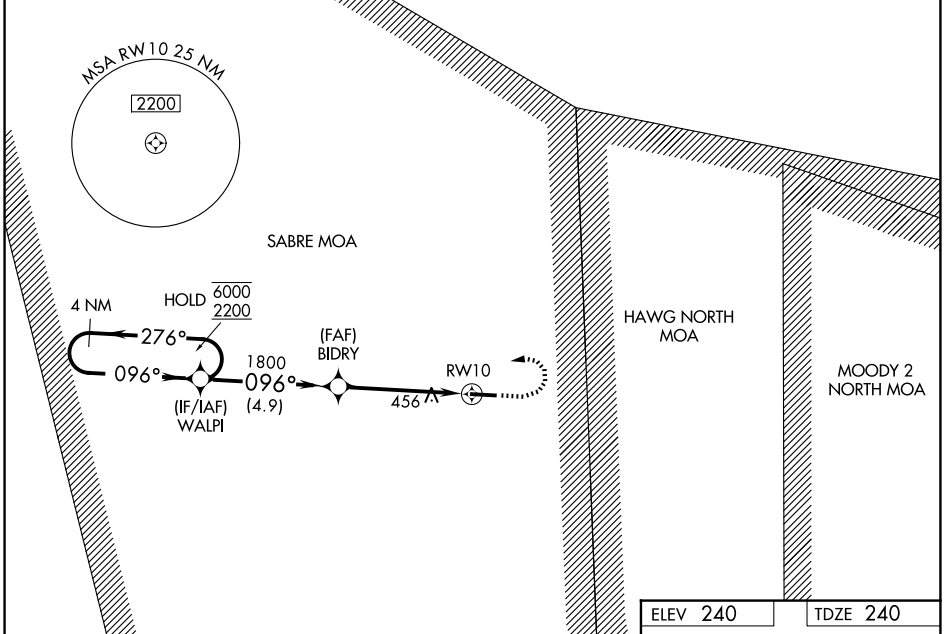
BERRIEN COUNTY (4J2)

RNP APCH - GPS.

⚠ Baro-VNAV NA. Rwy 10 helicopter visibility reduction below 3/4 SM NA. Circling Rwy 28 NA at night. Use VAD altimeter setting; when not received, use DQH altimeter setting and increase LPV DA to 584 feet; increase LNAV/VNAV DA to 800 feet and all visibilities 1/4 SM; increase all MDAs 40 feet and LNAV visibility Cat C 1/4 SM, and Circling visibility Cat C 1/4 SM.

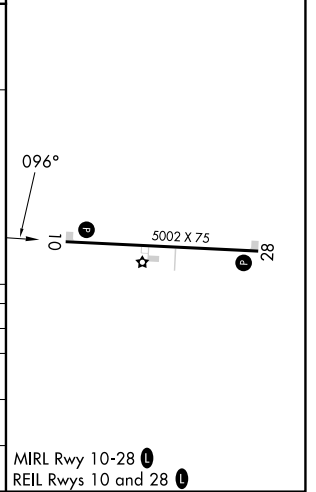
⚠ MISSED APPROACH: Climb to 800 then climbing left turn to 2200 direct WALPI and hold.

KVAD ATIS ★ 142.6 273.5	VALDOSTA APP CON ★ 126.6 285.6	UNICOM 122.7 (CTAF) 0
-----------------------------------	--	---------------------------------



ELEV 240	TDZE 240
----------	----------

CATEGORY	A	B	C	D
LPV DA		560-1	320 (400-1)	NA
LNAV/VNAV DA		760-1 3/8	520 (600-1 3/8)	NA
LNAV MDA	760-1	520 (600-1)	760-1 3/8 520 (600-1 3/8)	NA
CIRCLING	820-1	580 (600-1)	980-2 740 (800-2)	NA



SE-4, 14 MAY 2026 to 11 JUN 2026

SE-4, 14 MAY 2026 to 11 JUN 2026

MIRL Rwy 10-28 0
REL Rwy 10 and 28 0