

# DRAKE TWO DEPARTURE (OBSTACLE) (RNAV)

AL-6915 (FAA)

GLENDALE RGNL (GJT)  
GLENDALE, ARIZONA

ATIS  
 119.425  
 GND CON  
 118.0  
 GLENDALE TOWER ★  
 121.0  
 LUKE DEP CON ★  
 118.15 363.125  
 PHOENIX DEP CON  
 120.7 239.0



### TAKEOFF OBSTACLE NOTES

- Rwy 1: Light on blast fence 4' from DER, 130' left of centerline, up to 10' AGL/1088' MSL.  
 Trees beginning 124' from DER, left and right of centerline, up to 30' AGL/1104' MSL.  
 Vehicles beginning 299' from DER, 80' right of centerline, up to 15' AGL/1091' MSL.  
 Poles and trees beginning 400' from DER, 197' right of centerline, up to 75' AGL/1144' MSL.
- Rwy 19: Trees beginning 281' from DER, 331' left of centerline, up to 33' AGL/1060' MSL.

### TAKEOFF MINIMUMS

Rwys 1, 19: Standard with minimum climb of 500' per NM to 1580.

NOTE: RNAV 1.

NOTE: GPS required.

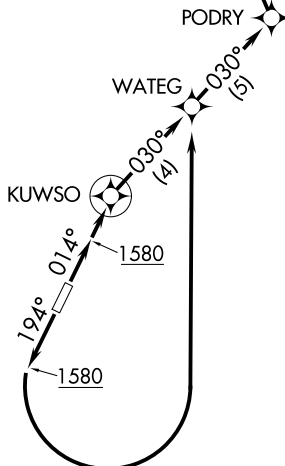
NOTE: Chart not to scale.

### DEPARTURE ROUTE DESCRIPTION

TAKEOFF RUNWAY 1: Climb heading 014° to 1580, then direct KUWSO, then as depicted to cross KARLO at/above 10000. . . .

TAKEOFF RUNWAY 19: Climb heading 194° to 1580, then left turn direct WATEG, then as depicted to cross KARLO at/above 10000. . . .

. . . .thence on track 350° to DRK VORTAC.  
Expect filed altitude 3 minutes after departure.



SW-4, 14 MAY 2026 to 11 JUN 2026

SW-4, 14 MAY 2026 to 11 JUN 2026

# DRAKE TWO DEPARTURE (OBSTACLE) (RNAV)