

WAAS CH <b>62899</b> <b>W18A</b>	APP CRS <b>177°</b>	Rwy Idg <b>6002</b> TDZE <b>700</b> Apt Elev <b>700</b>
--	------------------------	---

# RNAV (GPS) RWY 18R

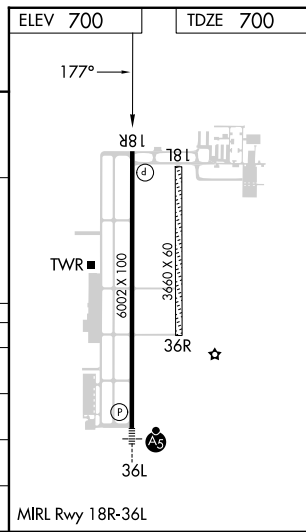
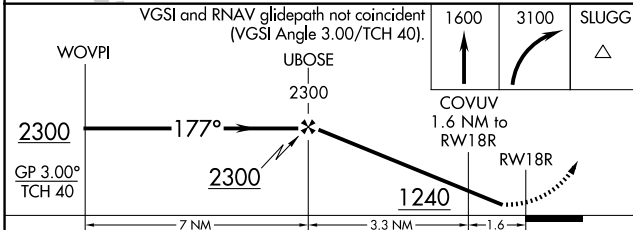
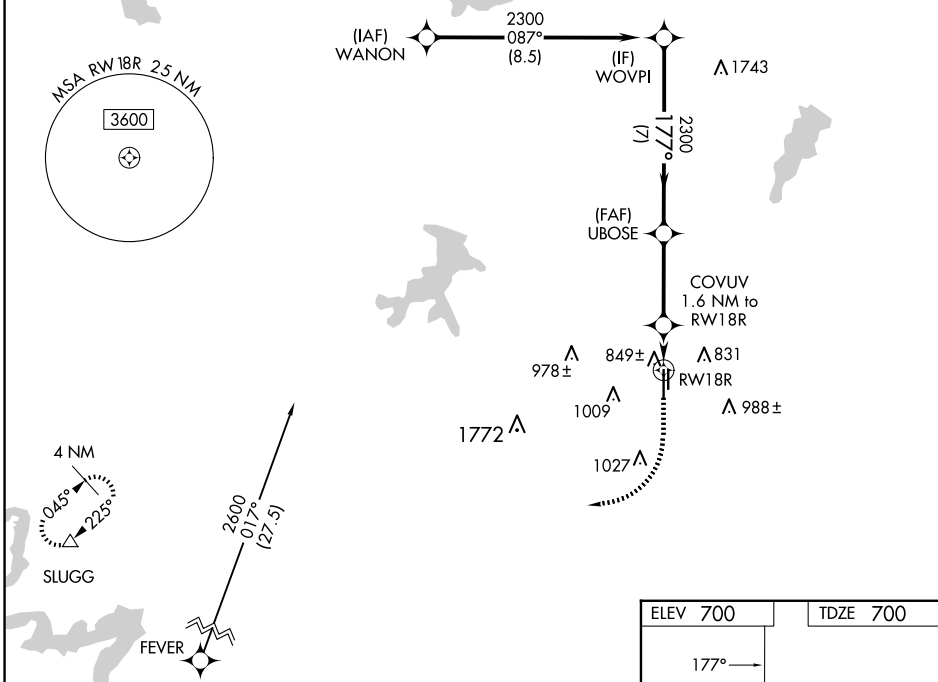
FORT WORTH SPINKS (FWS)

RNP APCH-GPS.

**⚠** Circling NA west of Rwy 18R-36L. Rwy 18R helicopter visibility reduction below  $\frac{3}{4}$  NA. For uncompensated Baro-VNAV systems, LNAV/VNAV NA below -16°C or above 54°C.

MISSED APPROACH: Climb to 1600 then climbing right turn to 3100 direct SLUGG and hold.

ATIS <b>120.025</b>	LONE STAR APP CON <b>135.975 379.9</b>	SPINKS TOWER <b>124.625</b> (CTAF) <b>0</b>	GND CON <b>119.475</b>	UNICOM <b>122.7</b>
------------------------	---	---	---------------------------	------------------------



CATEGORY	A	B	C	D
LPV DA	950- $\frac{3}{4}$		250 (300- $\frac{3}{4}$ )	
LNAV/VNAV DA	1030-1		330 (400-1)	
LNAV MDA	1100-1 400 (400-1)		1100-1 $\frac{1}{8}$ 400 (400-1 $\frac{1}{8}$ )	
CIRCLING	1200-1 500 (500-1)		1340-1 $\frac{3}{4}$ 640 (700-1 $\frac{3}{4}$ ) 1340-2 640 (700-2)	

SC-2, 14 MAY 2026 to 11 JUN 2026

SC-2, 14 MAY 2026 to 11 JUN 2026